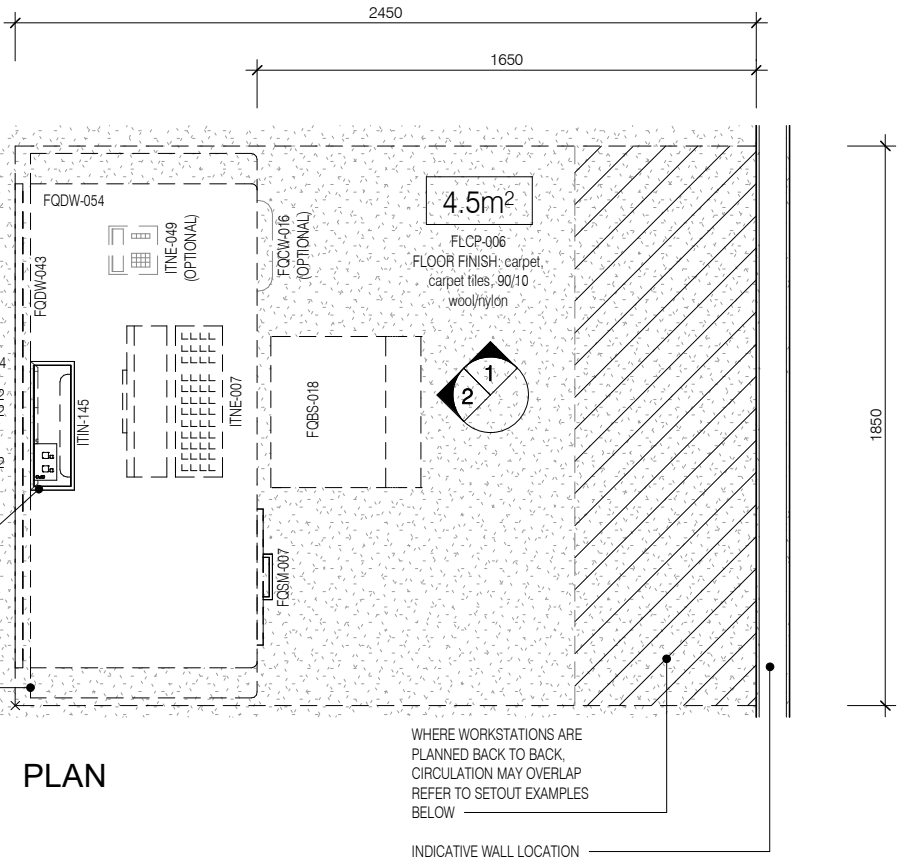


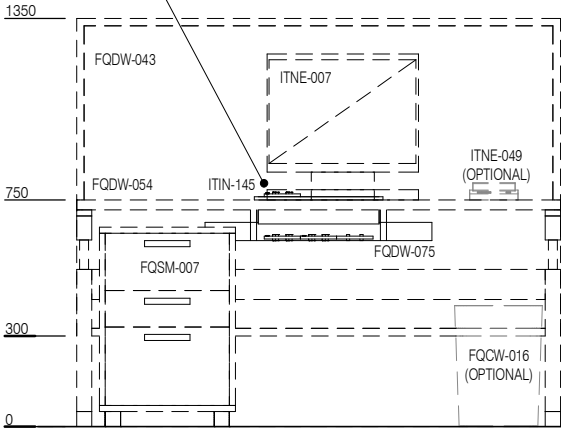
CODE	DESCRIPTION
ELGP-212	GPO: double, desk box
FLCP-006	FLOOR FINISH: carpet, carpet tiles, 90/10 wool/nylon
FQBS-018	CHAIR: office, ergonomic
FQCW-016	BIN: waste, general, 20L
FQDW-043	PARTITION: workstation system, acoustic
FQDW-054	WORKSTATION: straight, adj height, 1600W x 750D x 750H nom.
FQDW-075	WORKSTATION SYSTEM: cable tray, soft wired power and data
FQSM-007	PEDESTAL: mobile, drawer unit, 660H
ITIN-029	OUTLET: data, double RJ45, desk box
ITIN-145	DESK BOX: for power, data, AV, flush mounted, softwired
ITNE-007	COMPUTER: desktop, with display screen
ITNE-049	TELEPHONE: handset, desktop
WLWA-004	WALL FINISH: paint, acrylic, washable

CL TI-002  
CEILING: acoustic, drop-in tiles, 600 x 1200

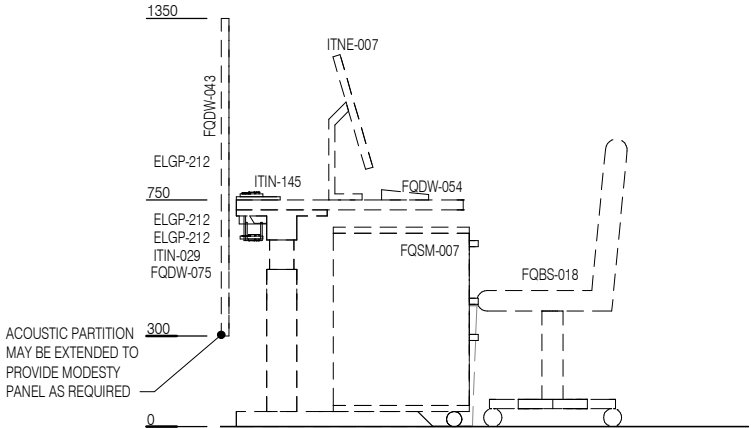


PLAN

DESKTOP SERVICES AND SOFT-WIRED CABLE TRAY TO BE PROVIDED IF WORKSTATION NOT LOCATED AGAINST A WALL. POWER AND DATA TO RUN IN SEPARATE CABLE TRAYS



ELEVATION 2



ELEVATION 1

