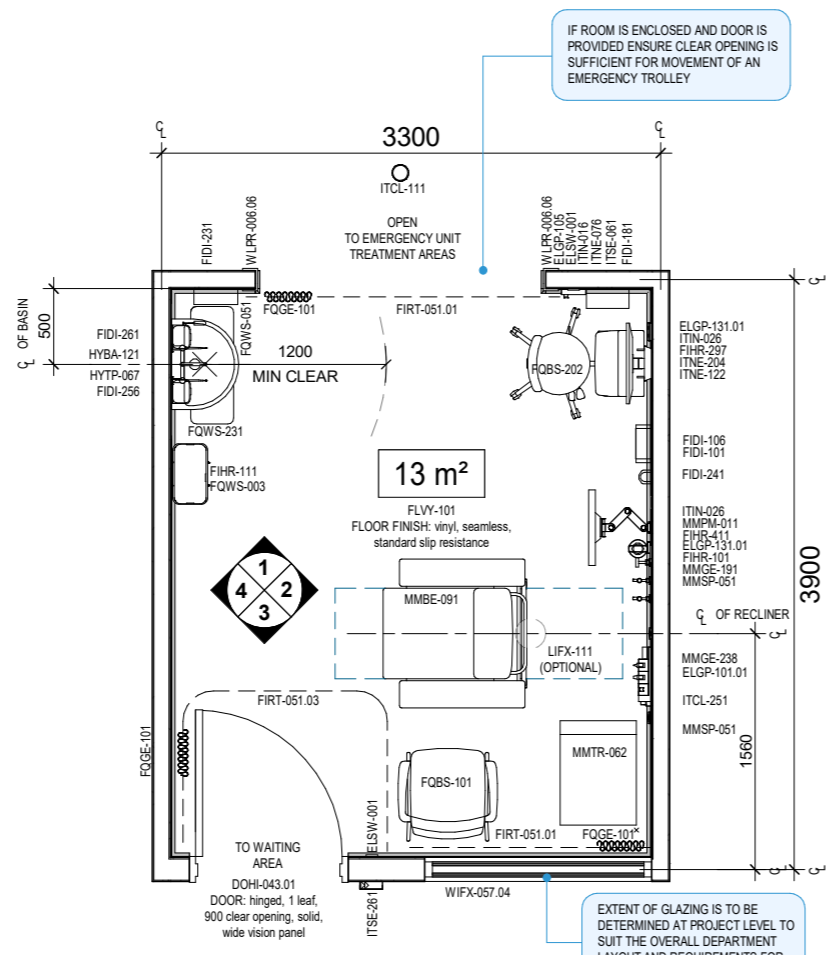




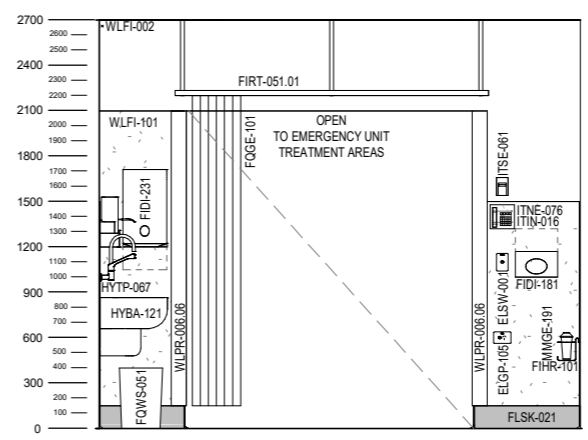
CODE	DESCRIPTION
AFDPR-006.01	DOOR PROTECTION: plate, to 900H
ELGP-101.01	GPO: single, wall mounted, horizontal
ELGP-105	GPO: single, wall mounted, cleaner
ELGP-131.01	GPO: single, emergency power, wall mounted, horizontal
ELGP-146	GPO: single, emergency power, on services panel
ELPR-083	RCD: residual current device, emergency power, on services panel
ELSW-001	SWITCH: light
FIDI-101	DISPENSER: PPE, disposable masks, wall mounted
FIDI-106	DISPENSER: PPE, disposable gloves, wall mounted
FIDI-181	DISPENSER: cleaning wipes, wall mounted
FIDI-231	DISPENSER: paper towel, wall mounted
FIDI-241	DISPENSER: alcohol-based hand rub, wall mounted
FIDI-256	DISPENSER: soap, wall mounted
FIDI-261	DISPENSER: soap, antimicrobial, wall mounted
FIHR-101	BRACKET: suction bottle, wall mounted
FIHR-111	BRACKET: sharps bin, wall mounted
FIHR-297	BRACKET: combined single screen all-in-one computer, keyboard and mouse, height adjustable, wall mounted
FIHR-411	BRACKET: patient monitor, articulated, wall mounted
FIRT-051.01	TRACK: curtain, privacy, straight
FIRT-051.03	TRACK: curtain, privacy, U-shaped
FLSK-021	SKIRTING: vinyl, integral with floor vinyl, coved
FLVY-101	FLOOR FINISH: vinyl, seamless, standard slip resistance
FQBS-101	CHAIR: visitor, clinical areas
FQBS-202	STOOL: clinical areas, mobile
FQGE-101	CURTAIN: privacy screen
FQWS-003	BIN: sharps, clinical, medium
FQWS-051	BIN: general waste, 20L
FQWS-231	BIN: clinical waste, 20L
HYBA-121	BASIN: type B, handwashing
HYTP-067	TAPWARE: basin, tap set, wall mounted, lever handles
ITCL-133	BUTTON: nurse call, patient to staff call, with cancel, with handset connection point, on services panel
ITCL-181	BUTTON: nurse call, staff assist, with cancel, wall mounted
ITCL-191	BUTTON: nurse call, emergency, with cancel, wall mounted
ITCL-251	HANDSET: nurse call, patient to staff call
ITIN-016	OUTLET: data, single RJ45, wall mounted
ITIN-025	OUTLET: data, double RJ45, on services panel
ITIN-026	OUTLET: data, double RJ45, wall mounted
ITNE-076	TELEPHONE: handset, wall mounted
ITNE-122	COMPUTER: single display screen, all-in-one, medical grade
ITNE-204	INPUT DEVICE: keyboard and mouse, wireless, medical grade, washable
ITSE-061	BUTTON: security, duress, fixed, wall mounted
ITSE-261	READER: security, access control, proximity card, wall mounted
LIFX-111	LIGHT: examination, ceiling recessed
MGAS-022	OUTLET: medical air, on services panel
MGAS-042	OUTLET: oxygen (O2), on services panel
MGAS-062	OUTLET: suction, on services panel
MGFP-021	FLOWMETER: medical air
MGFP-041	FLOWMETER: oxygen
MGFP-061	ADAPTER: suction
MMBE-091	CHAIR: patient, recliner, clinical, electric
MMGE-191	CANNISTER: suction bottle
MMGE-238	DIAGNOSTIC SET: otoscope, ophthalmoscope and thermometer, wall mounted
MMPM-011	MONITOR: patient, medium acuity
MMTR-062	TROLLEY: dressing, 600W x 490D x 900H nom
WLFI-002	WALL FINISH: paint, clinical areas
WLFI-011.04	WALL FINISH: vinyl, to 1500 AFFL
WLFI-101	SPLASHBACK: vinyl
WLPR-006.06	WALL PROTECTION: corner guards, to 2100 AFFL



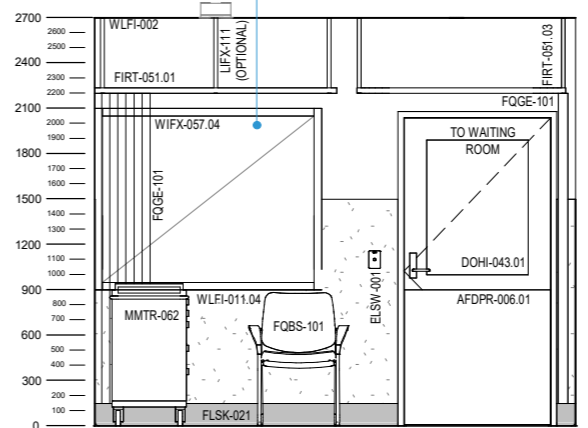
PLAN



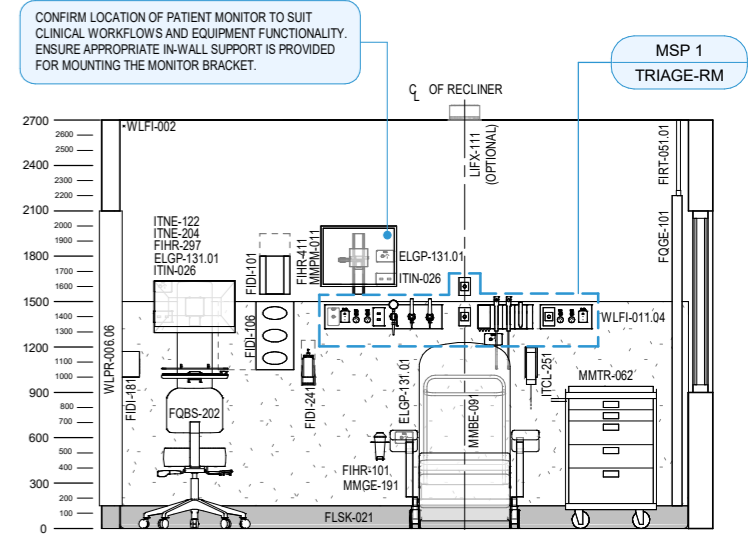
3D VIEW



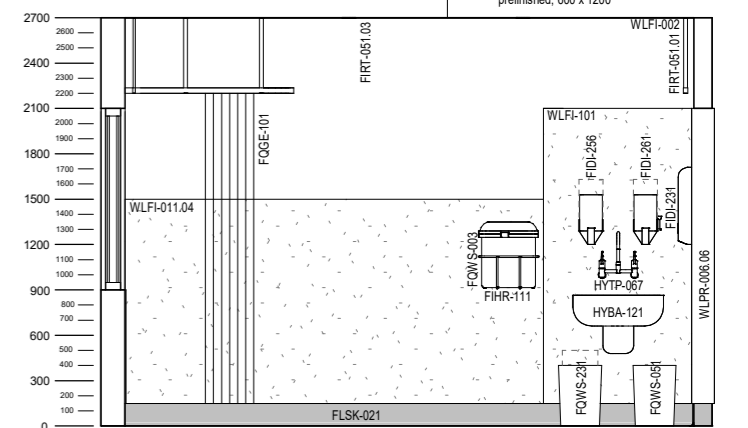
ELEVATION 1



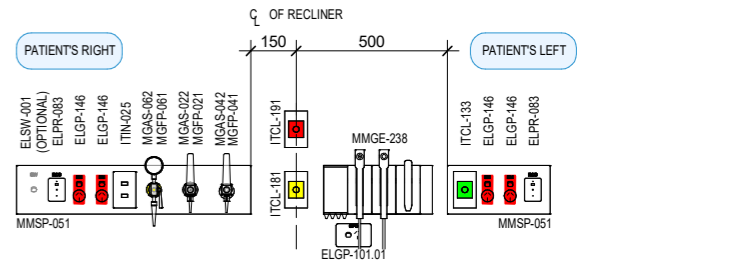
ELEVATION 3



ELEVATION 2



ELEVATION 4



DETAIL MSP 1 (1:25 @ A3)