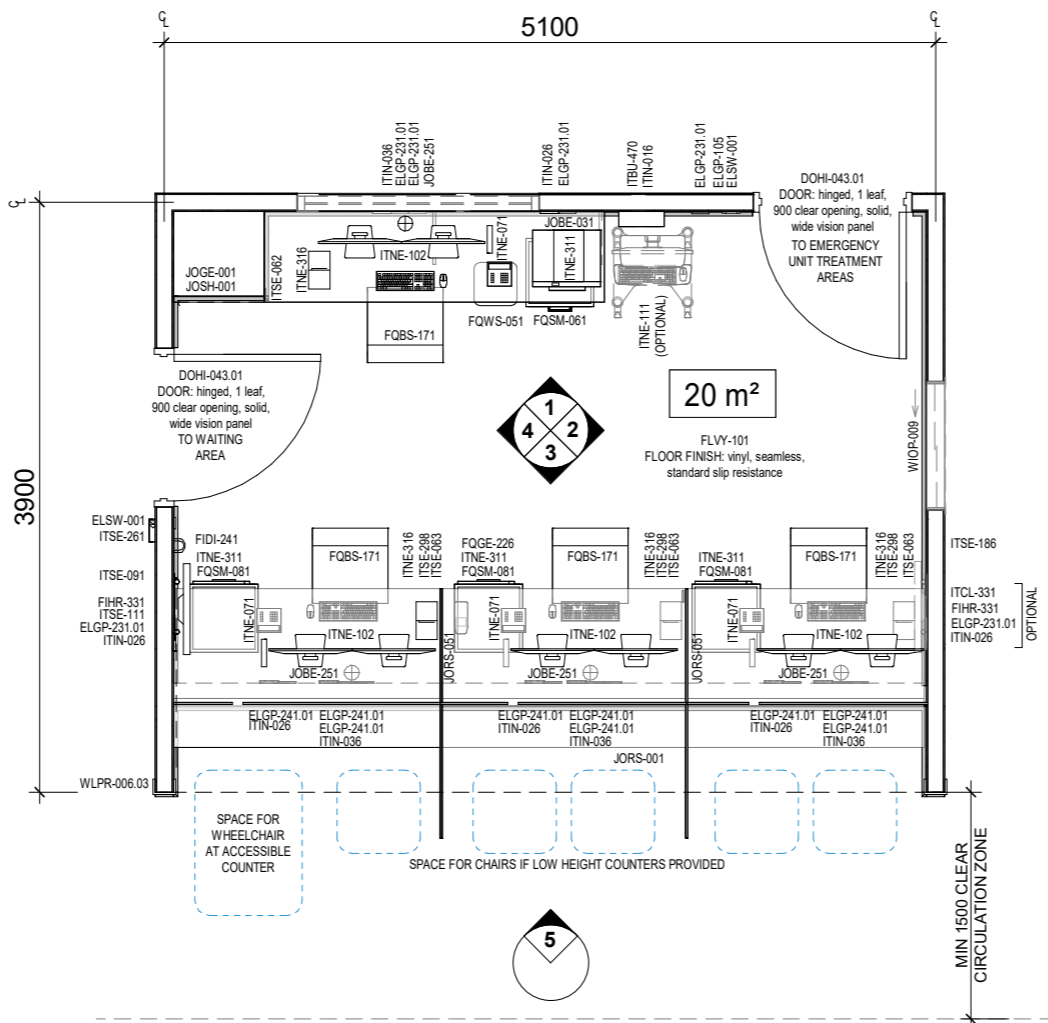


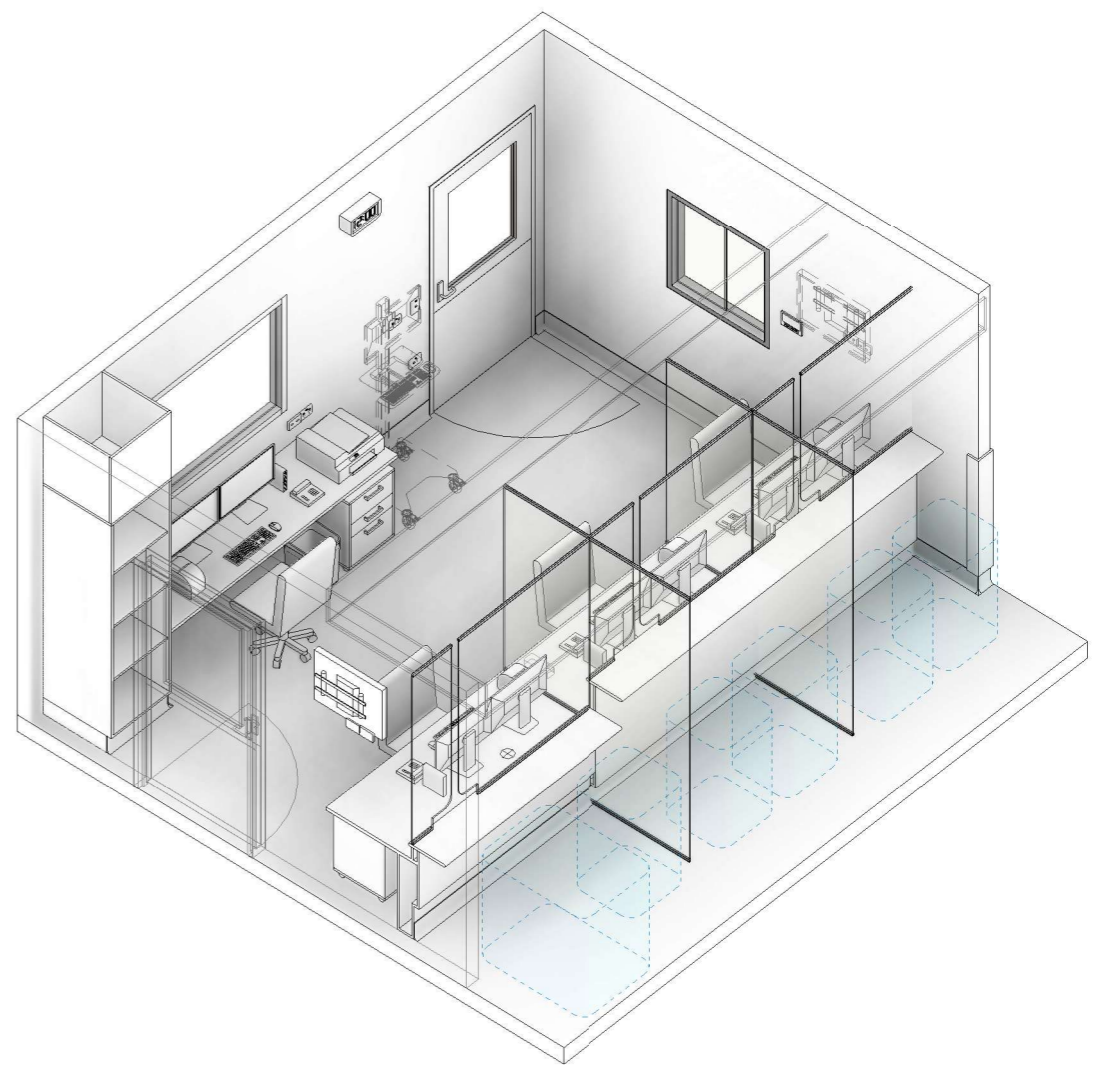


CODE	DESCRIPTION
AFDPR-006.01	DOOR PROTECTION: plate, to 900H
CLBK-012	BULKHEAD: flush set, acoustic
ELGP-105	GPO: single, wall mounted, cleaner
ELGP-231.01	GPO: double, emergency power, wall mounted, horizontal
ELGP-241.01	GPO: double, emergency power, joinery mounted, horizontal
ELSW-001	SWITCH: light
FIDI-241	DISPENSER: alcohol-based hand rub, wall mounted
FIHR-331	BRACKET: display screen, single, fixed, wall mounted
FLSK-021	SKIRTING: vinyl, integral with floor vinyl, coved
FLVY-101	FLOOR FINISH: vinyl, seamless, standard slip resistance
FQBS-171	CHAIR: office, ergonomic
FQGE-226	DEVICE: electronic funds transfer at point of sale (EFTPOS)
FQSM-061	PEDESTAL: mobile, 660H nominal, 2 equal drawers and 1 file drawer
FQSM-081	PEDESTAL: mobile, 660H nominal, 1 drawer and 1 printer shelf
FQWS-051	BIN: general waste, 20L
ITBU-470	CLOCK: digital display, electric, synchronised slave, wired internet protocol (IP), wall mounted
ITCL-331	DISPLAY SCREEN: patient flow system
ITIN-016	OUTLET: data, single RJ45, wall mounted
ITIN-026	OUTLET: data, double RJ45, wall mounted
ITIN-036	OUTLET: data, triple RJ45, wall mounted
ITNE-071	TELEPHONE: handset, desktop
ITNE-102	COMPUTER: dual display screens, central processing unit (CPU), keyboard and mouse, desktop
ITNE-111	COMPUTER: workstation on wheels (WOW), medical grade, all-in-one computer, keyboard and mouse, on cart
ITNE-311	PRINTER: desktop
ITNE-316	PRINTER: labels, small, desktop
ITSE-062	BUTTON: security, duress, fixed, surface mounted
ITSE-063	BUTTON: security, duress, fixed, under bench mounted
ITSE-091	BUTTON: security, perimeter lockdown, wall mounted
ITSE-111	DISPLAY SCREEN: security, CCTV monitoring
ITSE-186	INTERCOM: audio-visual, slave, wall mounted
ITSE-261	READER: security, access control, proximity card, wall mounted
ITSE-298	BUTTON: door release, remote activation, surface mounted
JOBE-031	BENCH: 600D, laminate
JOBE-211	BENCH SUPPORT: bracket
JOBE-251	CAP: cable access
JOGE-001	BULKHEAD: joinery
JORS-001	JOINERY UNIT: reception desk
JORS-002	JOINERY UNIT: reception desk, accessible
JORS-051	SECURITY GLAZING: to reception
JORS-053	SECURITY GLAZING: to reception, with communication slot and pass through aperture
JOSH-001	SHELF UNIT: tall, adjustable shelves
WLFI-002	WALL FINISH: paint, clinical areas
WLPR-006.03	WALL PROTECTION: corner guards, to 1200 AFFL



PLAN

WAITING AREA



3D VIEW

Scale

Plan + Elevations
1:50 @ A3

Details
1:25 @ A3

FOR GUIDANCE

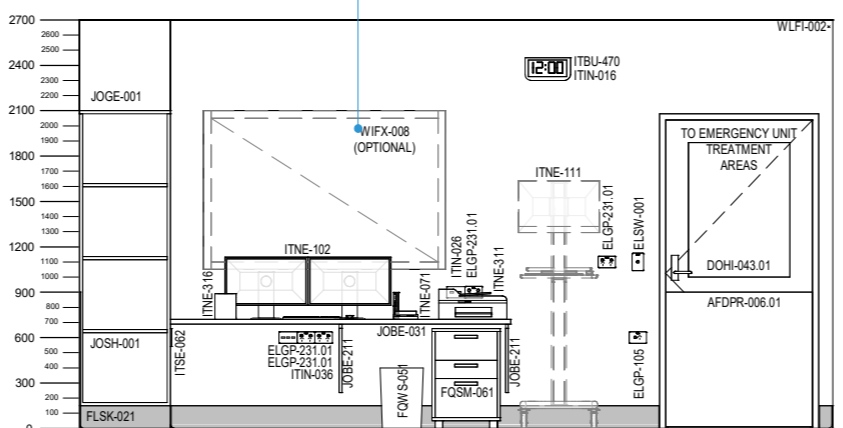
Revision	Description	Date	Room Code
8	Redocumented in new RLS format	31.03.2026	RECP-E
7	Updated following AHIA review	18.08.2025	
6	Updated following AHIA review	29.05.2019	Revision 8
5	Item coding and naming updated	20.03.2017	





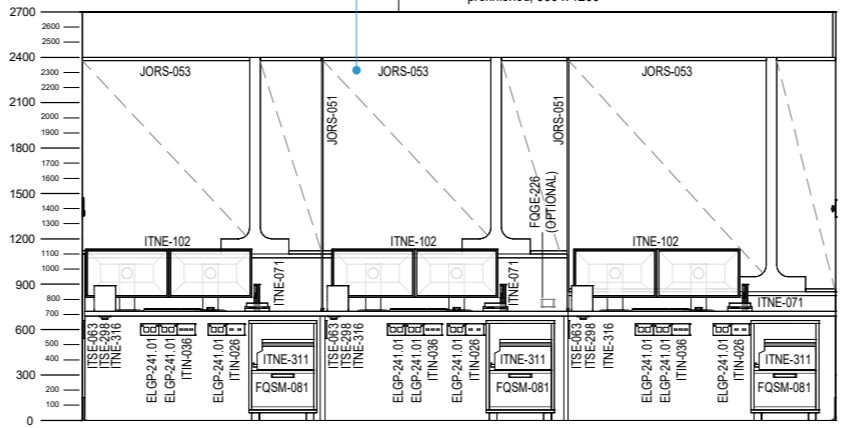
CODE	DESCRIPTION
AFDPR-006.01	DOOR PROTECTION: plate, to 900H
CLBK-012	BULKHEAD: flush set, acoustic
ELGP-105	GPO: single, wall mounted, cleaner
ELGP-231.01	GPO: double, emergency power, wall mounted, horizontal
ELGP-241.01	GPO: double, emergency power, joinery mounted, horizontal
ELSW-001	SWITCH: light
FIDI-241	DISPENSER: alcohol-based hand rub, wall mounted
FIHR-331	BRACKET: display screen, single, fixed, wall mounted
FLSK-021	SKIRTING: vinyl, integral with floor vinyl, coved
FLVY-101	FLOOR FINISH: vinyl, seamless, standard slip resistance
FQBS-171	CHAIR: office, ergonomic
FQGE-226	DEVICE: electronic funds transfer at point of sale (EFTPOS)
FQSM-061	PEDESTAL: mobile, 660H nominal, 2 equal drawers and 1 file drawer
FQSM-081	PEDESTAL: mobile, 660H nominal, 1 drawer and 1 printer shelf
FQWS-051	BIN: general waste, 20L
ITBU-470	CLOCK: digital display, electric, synchronised slave, wired internet protocol (IP), wall mounted
ITCL-331	DISPLAY SCREEN: patient flow system
ITIN-016	OUTLET: data, single RJ45, wall mounted
ITIN-026	OUTLET: data, double RJ45, wall mounted
ITIN-036	OUTLET: data, triple RJ45, wall mounted
ITNE-071	TELEPHONE: handset, desktop
ITNE-102	COMPUTER: dual display screens, central processing unit (CPU), keyboard and mouse, desktop
ITNE-111	COMPUTER: workstation on wheels (WOW), medical grade, all-in-one computer, keyboard and mouse, on cart
ITNE-311	PRINTER: desktop
ITNE-316	PRINTER: labels, small, desktop
ITSE-062	BUTTON: security, duress, fixed, surface mounted
ITSE-063	BUTTON: security, duress, fixed, under bench mounted
ITSE-091	BUTTON: security, perimeter lockdown, wall mounted
ITSE-111	DISPLAY SCREEN: security, CCTV monitoring
ITSE-186	INTERCOM: audio-visual, slave, wall mounted
ITSE-261	READER: security, access control, proximity card, wall mounted
ITSE-298	BUTTON: door release, remote activation, surface mounted
JOBE-031	BENCH: 600D, laminate
JOBE-211	BENCH SUPPORT: bracket
JOBE-251	CAP: cable access
JOGE-001	BULKHEAD: joinery
JORS-001	JOINERY UNIT: reception desk
JORS-002	JOINERY UNIT: reception desk, accessible
JORS-051	SECURITY GLAZING: to reception
JORS-053	SECURITY GLAZING: to reception, with communication slot and pass through aperture
JOSH-001	SHELF UNIT: tall, adjustable shelves
WLFI-002	WALL FINISH: paint, clinical areas
WLPR-006.03	WALL PROTECTION: corner guards, to 1200 AFFL

IF THE AMBULANCE ENTRY AREA IS COLLOCATED, PROVISION OF A WINDOW FOR VISUAL ACCESS FROM THE RECEPTION MAY BE CONSIDERED TO SUPPORT EFFICIENT REGISTRATION OF PATIENTS ARRIVING BY AMBULANCE

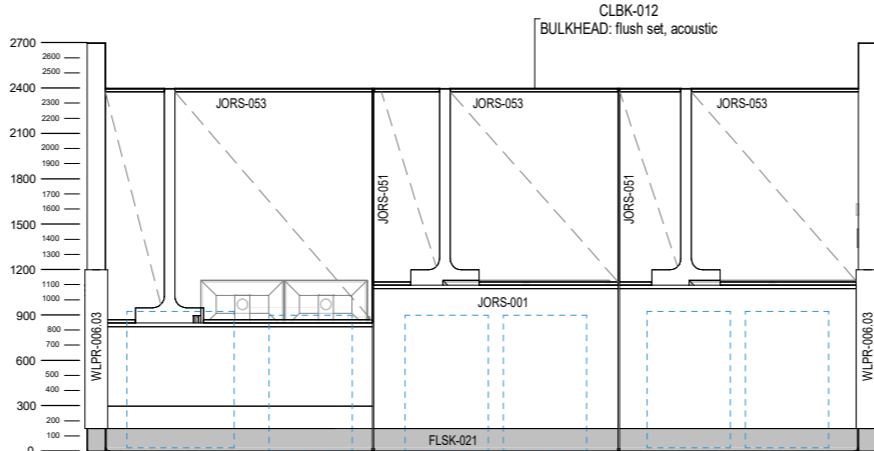


ELEVATION 1

CONFIGURATION AND EXTENT OF GLAZING, INCLUDING FOR PRIVACY DIVIDERS BETWEEN COUNTERS, TO BE DETERMINED AT PROJECT LEVEL TO SUIT THE OVERALL DEPARTMENT LAYOUT AND REQUIREMENTS FOR WAITING ROOM OBSERVATION AND PATIENT PRIVACY

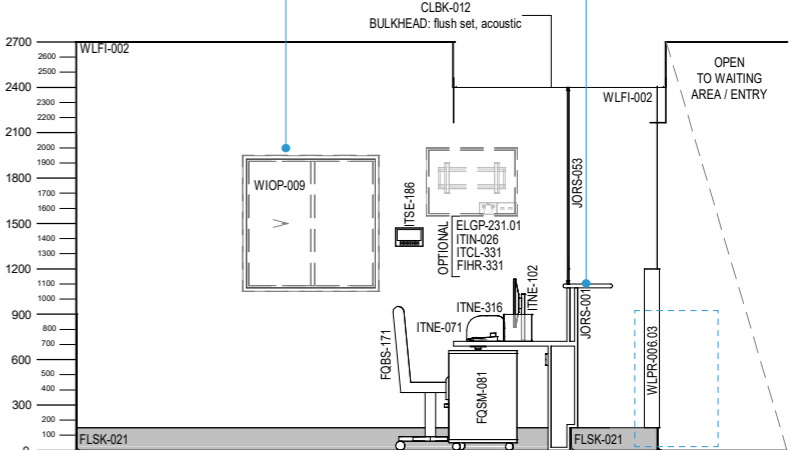


ELEVATION 3



ELEVATION 5

IF A TRIAGE ASSESSMENT ROOM IS COLLOCATED, PROVISION OF A WINDOW FOR VISUAL ACCESS FROM THE RECEPTION MAY BE CONSIDERED TO SUPPORT STAFF ARE NOT ISOLATED IN THE FRONT OF HOUSE AREA. THIS WINDOW MAY BE A FIXED OR OPERABLE TYPE (I.E. TO ALLOW PASSING ITEMS / DOCUMENTS)

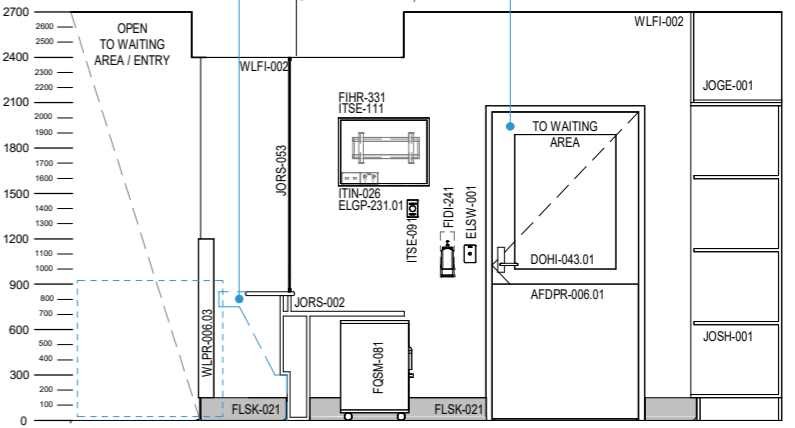


ELEVATION 2

THE HEIGHTS OF THE COUNTER AND STAFF WORKSTATION ARE TO BE CONFIRMED AT PROJECT LEVEL. THE COUNTER MAY BE DESIGNED TO SUIT PATIENTS / VISITORS AT STANDING OR SEATED HEIGHT DEPENDING ON THE OPERATIONAL MODELS FOR PATIENT REGISTRATION. HEIGHT OF STAFF WORKSTATION AND SEATING TO BE COORDINATED WITH THE COUNTER HEIGHT TO SUPPORT COMMUNICATION WITH PATIENTS / VISITORS AND PROVISION OF AN ERGONOMIC WORKSPACE FOR STAFF. AT LEAST ONE COUNTER MUST BE DESIGNED TO BE WHEELCHAIR ACCESSIBLE.

KNEE AND FOOT CLEARANCE REQUIRED FOR WHEELCHAIR AT ACCESSIBLE COUNTER

DEPENDENT ON OVERALL DEPARTMENT PLANNING, DIRECT ACCESS TO THE WAITING AREA OR ACCESS TO A ZONE CLOSE TO THE MAIN ENTRY DOORS TO THE EMERGENCY UNIT IS TO BE PROVIDED



ELEVATION 4

Revision	Description	Date	Room Code
8	Redocumented in new RLS format	31.03.2026	RECP-E
7	Updated following AHIA review	18.08.2025	
6	Updated following AHIA review	29.05.2019	Revision
5	Item coding and naming updated	20.03.2017	8

