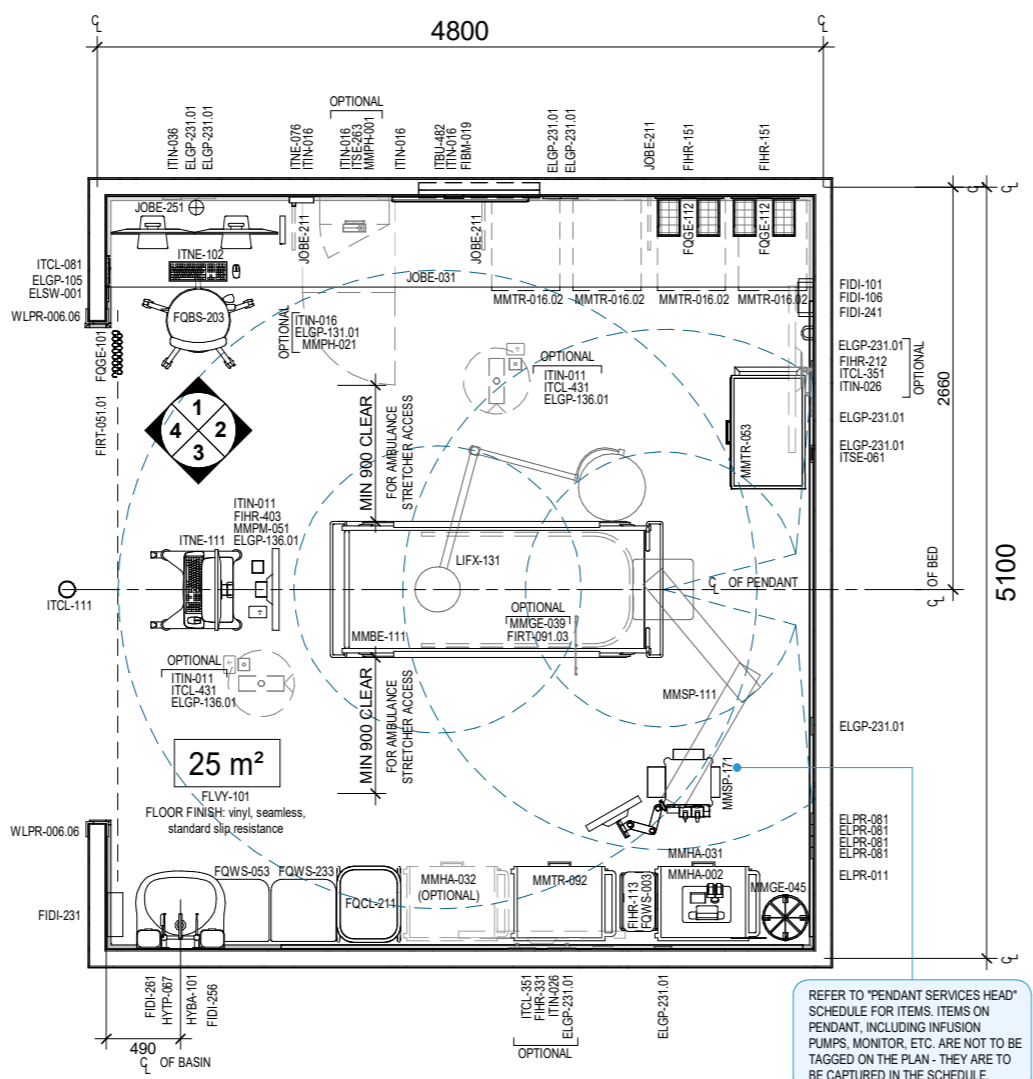
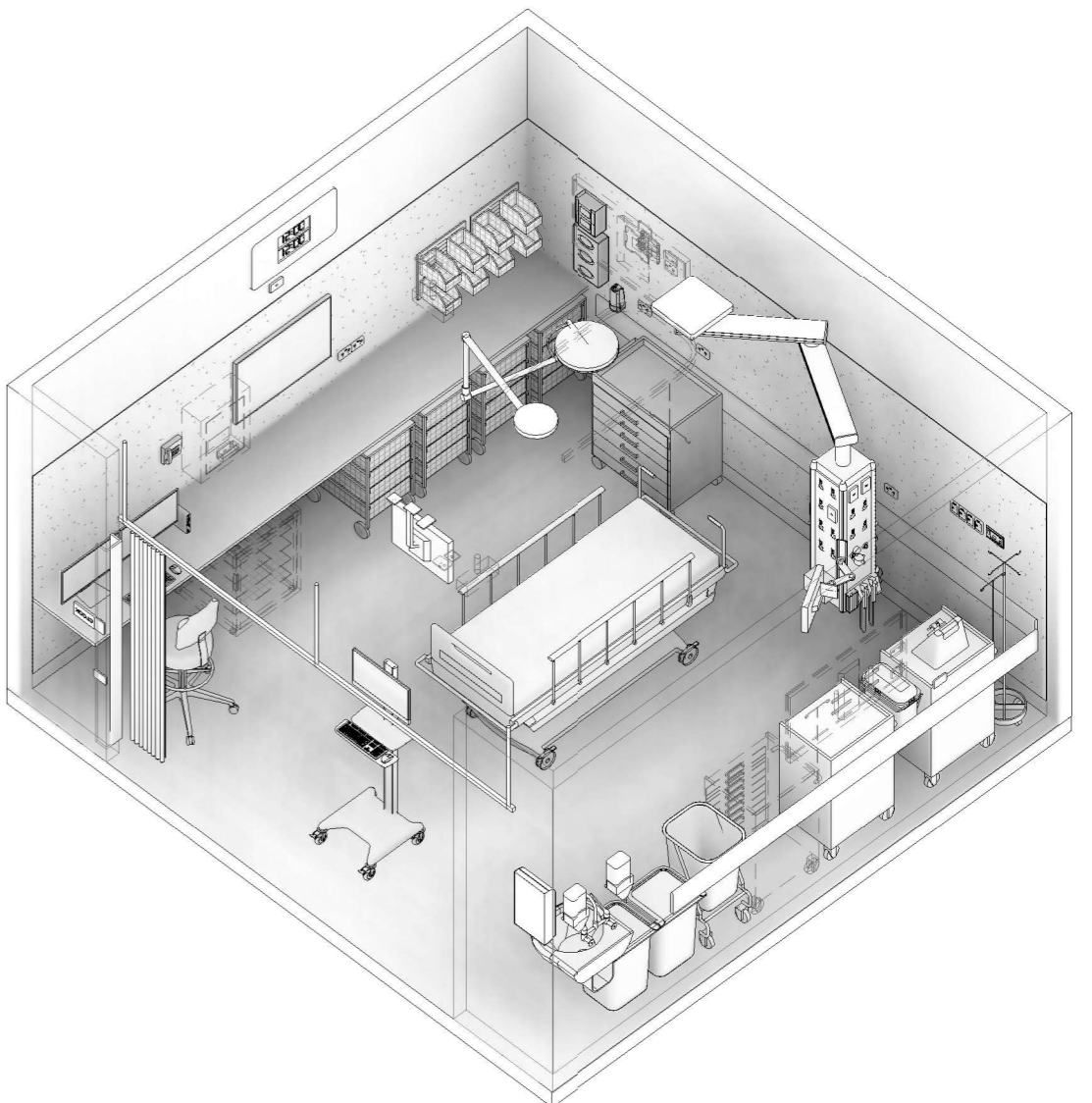




CODE	DESCRIPTION
ELGP-105	GPO: single, wall mounted, cleaner
ELGP-136.01	GPO: single, emergency power, ceiling mounted, horizontal
ELGP-231.01	GPO: double, emergency power, wall mounted, horizontal
ELPR-011	MONITOR: line isolation, wall mounted
ELPR-081	RCD: residual current device, emergency power, wall mounted
ELSW-001	SWITCH: light
FIBM-019	WHITEBOARD: fixed, magnetic
FIDI-101	DISPENSER: PPE, disposable masks, wall mounted
FIDI-106	DISPENSER: PPE, disposable gloves, wall mounted
FIDI-231	DISPENSER: paper towel, wall mounted
FIDI-241	DISPENSER: alcohol-based hand rub, wall mounted
FIDI-256	DISPENSER: soap, wall mounted
FIDI-261	DISPENSER: soap, antimicrobial, wall mounted
FIHR-113	BRACKET: sharps bin, equipment rail mounted
FIHR-151	PANEL: storage baskets, wall mounted
FIHR-212	BRACKET: computer display screen, single, articulated, wall mounted
FIHR-331	BRACKET: display screen, single, fixed, wall mounted
FIHR-403	BRACKET: patient monitor, fixed, ceiling mounted
FIRT-051.01	TRACK: curtain, privacy, straight
FIRT-091.03	TRACK: IV, ceiling mounted, U-shape
FLSK-021	SKIRTING: vinyl, integral with floor vinyl, coved
FLVY-101	FLOOR FINISH: vinyl, seamless, standard slip resistance
FOBS-203	STOOL: clinical areas, mobile, high
FOCL-211	LINEN CARRIER: dirty, single skip
FOGE-101	CURTAIN: privacy screen
FOGE-112	BASKET: storage, for wall mounted panel, small
FOWS-003	BIN: sharps, clinical, medium
FOWS-053	BIN: general waste, 50L
FOWS-233	BIN: clinical waste, 50L
HYBA-101	BASIN: type A, handwashing
HYTP-067	TAPWARE: basin, tap set, wall mounted, lever handles
ITBU-482	CLOCK: digital display, with time and elapsed time, electric, synchronised slave, wired internet protocol (IP), wall recessed
ITCL-081	CONTROL PANEL: master clock system
ITCL-111	LIGHT: nurse call indicator, ceiling mounted
ITCL-351	DISPLAY SCREEN: patient treatment information
ITCL-431	CAMERA: patient observation, ceiling mounted
ITIN-011	OUTLET: data, single RJ45, ceiling mounted
ITIN-016	OUTLET: data, single RJ45, wall mounted
ITIN-026	OUTLET: data, double RJ45, wall mounted
ITIN-036	OUTLET: data, triple RJ45, wall mounted
ITNE-076	TELEPHONE: handset, wall mounted
ITNE-102	COMPUTER: dual display screens, central processing unit (CPU), keyboard and mouse, desktop
ITNE-111	COMPUTER: workstation on wheels (WOW), medical grade, all-in-one computer, keyboard and mouse, on cart
ITSE-061	BUTTON: security, duress, fixed, wall mounted
ITSE-263	READER: security, access control, proximity card, to drug safe
JOBE-031	BENCH: 600D, laminate
JOBE-211	BENCH SUPPORT: bracket
JOBE-251	CAP: cable access
LIFX-131	LIGHT: procedure, articulated, ceiling mounted
MMBE-111	BED: patient, electric, with mattress, emergency
MMGE-039	HANGER: IV, for ceiling track
MMGE-045	POLE: IV, mobile
MMHA-002	DEVICE: defibrillator
MMHA-031	TROLLEY: resuscitation, adult
MMHA-032	TROLLEY: resuscitation, paediatric
MMPH-001	SAFE: dangerous drugs, wall mounted, small
MMPH-021	FRIDGE: medication/vaccine, 150L nom, single door, under bench
MMPM-051	MONITOR: patient, slave, remote monitoring and control
MMTR-016.02	TROLLEY: stainless steel, wire mesh drawers, 490W x 600D x 900H nom, 4 drawers
MMTR-053	TROLLEY: airway/intubation, 750W x 490D x 900H nom
MMTR-092	TROLLEY: procedure, 600W x 490D x 900H nom
WLFI-002	WALL FINISH: paint, clinical areas
WLFI-011.06	WALL FINISH: vinyl, to 2100 AFFL
WLFI-101	SPLASHBACK: vinyl
WLPR-046.03	WALL PROTECTION: crash rail, to 900 AFFL



PLAN

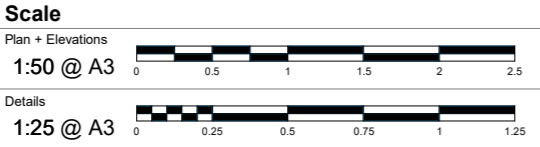


3D VIEW

**PENDANT SERVICES HEAD**

Code	Description	Count
ELGP-151	GPO: single, emergency power, on pendant services head	10
ELGP-181	GPO: single, UPS, on pendant services head	4
ELPR-034	PANEL: UPS status indicator, on pendant services head	1
FIHR-104	BRACKET: suction bottle, on pendant services head	3
FIHR-414	BRACKET: patient monitor, articulated, on pendant services head	1
FIHR-423	BRACKET: ventilator, on pendant services head	1
ITCL-135	BUTTON: nurse call, patient to staff call, with cancel, with handset connection point, on pendant services head	1
ITCL-185	BUTTON: nurse call, staff assist, with cancel, on pendant services head	1
ITCL-195	BUTTON: nurse call, emergency, with cancel, on pendant services head	1
ITCL-251	HANDSET: nurse call, patient to staff call	1
ITIN-014	OUTLET: data, single RJ45, on pendant services head	1
ITIN-034	OUTLET: data, triple RJ45, on pendant services head	2
ITIN-066	OUTLET: data, HDMI, wall mounted	1
MGAS-021	OUTLET: medical air, on pendant services head	1
MGAS-031	OUTLET: nitrous oxide (N2O), on pendant services head	1
MGAS-041	OUTLET: oxygen (O2), on pendant services head	3
MGAS-051	OUTLET: scavange, on pendant services head	1
MGAS-061	OUTLET: suction, on pendant services head	3
MGFP-021	FLOWMETER: medical air	1
MGFP-041	FLOWMETER: oxygen	3
MGFP-051	ADAPTER: scavange	1
MGFP-061	ADAPTER: suction	3
MMGE-191	CANNISTER: suction bottle	3
MMGE-235	DIAGNOSTIC SET: otoscope and ophthalmoscope, on pendant services head	1
MMGE-291	DEVICE: pump, infusion, single	1
MMGE-296	DEVICE: pump, syringe	1
MMHA-051	DEVICE: ventilator, adult	1
MMPM-021	MONITOR: patient, high acuity	1
MMSP-111	PENDANT: single arm, ceiling mounted	1
MMSP-171	MEDICAL SERVICES HEAD: vertical, on pendant arm	1

PROVISION OF RETICULATED NITROUS OXIDE IS OPTIONAL AND MUST BE CONFIRMED TO SUIT LOCAL JURISDICTIONAL POLICIES AND OPERATIONAL SERVICE REQUIREMENTS. REFER TO THE ROOM DATA SHEET FOR MORE INFORMATION.



**FOR GUIDANCE**

Revision	Description	Date	Room Code
8	Redocumented in new RLS format with panorama	31.03.2026	PTB-E-RES
7	Updated following AHIA review	18.08.2025	
6	Updated following AHIA review	29.05.2019	
5	Item coding and naming updated	20.03.2017	

**Revision**  
8



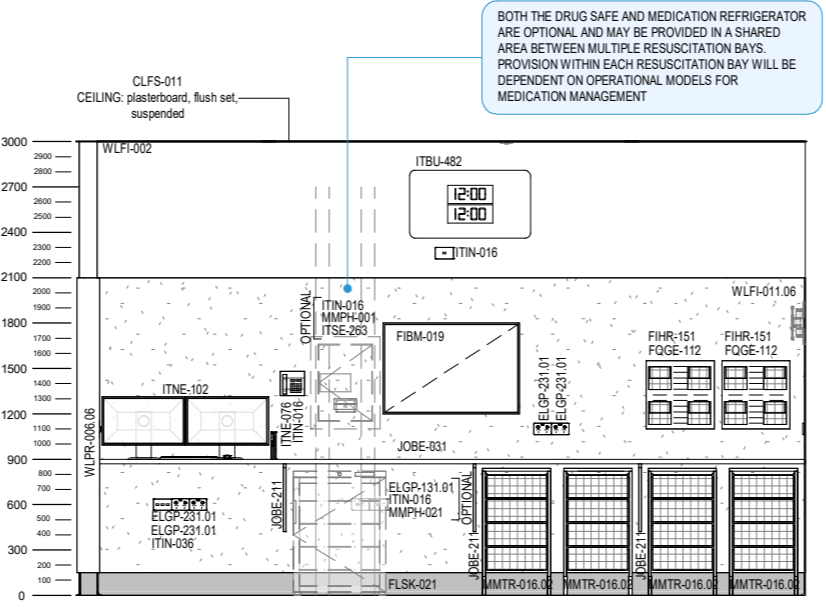


CODE	DESCRIPTION
ELGP-105	GPO: single, wall mounted, cleaner
ELGP-136.01	GPO: single, emergency power, ceiling mounted, horizontal
ELGP-231.01	GPO: double, emergency power, wall mounted, horizontal
ELPR-011	MONITOR: line isolation, wall mounted
ELPR-081	RCD: residual current device, emergency power, wall mounted
ELSW-001	SWITCH: light
FIBM-019	WHITEBOARD: fixed, magnetic
FIDI-101	DISPENSER: PPE, disposable masks, wall mounted
FIDI-106	DISPENSER: PPE, disposable gloves, wall mounted
FIDI-231	DISPENSER: paper towel, wall mounted
FIDI-241	DISPENSER: alcohol-based hand rub, wall mounted
FIDI-256	DISPENSER: soap, wall mounted
FIDI-261	DISPENSER: soap, antimicrobial, wall mounted
FIHR-113	BRACKET: sharps bin, equipment rail mounted
FIHR-151	PANEL: storage baskets, wall mounted
FIHR-212	BRACKET: computer display screen, single, articulated, wall mounted
FIHR-331	BRACKET: display screen, single, fixed, wall mounted
FIHR-403	BRACKET: patient monitor, fixed, ceiling mounted
FIRT-051.01	TRACK: curtain, privacy, straight
FIRT-091.03	TRACK: IV, ceiling mounted, U-shape
FLSK-021	SKIRTING: vinyl, integral with floor vinyl, coved
FLVY-101	FLOOR FINISH: vinyl, seamless, standard slip resistance
FQBS-203	STOOL: clinical areas, mobile, high
FQCL-211	LINEN CARRIER: dirty, single skip
FQGE-101	CURTAIN: privacy screen
FQGE-112	BASKET: storage, for wall mounted panel, small
FQWS-003	BIN: sharps, clinical, medium
FQWS-053	BIN: general waste, 50L
FQWS-233	BIN: clinical waste, 50L
HYBA-101	BASIN: type A, handwashing
HYTP-067	TAPWARE: basin, tap set, wall mounted, lever handles
ITBU-482	CLOCK: digital display, with time and elapsed time, electric, synchronised slave, wired internet protocol (IP), wall recessed
ITCL-081	CONTROL PANEL: master clock system
ITCL-111	LIGHT: nurse call indicator, ceiling mounted
ITCL-351	DISPLAY SCREEN: patient treatment information
ITCL-431	CAMERA: patient observation, ceiling mounted
ITIN-011	OUTLET: data, single RJ45, ceiling mounted
ITIN-016	OUTLET: data, single RJ45, wall mounted
ITIN-026	OUTLET: data, double RJ45, wall mounted
ITIN-036	OUTLET: data, triple RJ45, wall mounted
ITNE-076	TELEPHONE: handset, wall mounted
ITNE-102	COMPUTER: dual display screens, central processing unit (CPU), keyboard and mouse, desktop
ITNE-111	COMPUTER: workstation on wheels (WOW), medical grade, all-in-one computer, keyboard and mouse, on cart
ITSE-061	BUTTON: security, duress, fixed, wall mounted
ITSE-263	READER: security, access control, proximity card, to drug safe
JOBE-031	BENCH: 600D, laminate
JOBE-211	BENCH SUPPORT: bracket
JOBE-251	CAP: cable access
LIFX-131	LIGHT: procedure, articulated, ceiling mounted
MMBE-111	BED: patient, electric, with mattress, emergency
MMGE-039	HANGER: IV, for ceiling track
MMGE-045	POLE: IV, mobile
MMHA-002	DEVICE: defibrillator
MMHA-031	TROLLEY: resuscitation, adult
MMHA-032	TROLLEY: resuscitation, paediatric
MMPH-001	SAFE: dangerous drugs, wall mounted, small
MMPH-021	FRIDGE: medication/vaccine, 150L nom, single door, under bench
MMPM-051	MONITOR: patient, slave, remote monitoring and control
MMTR-016.02	TROLLEY: stainless steel, wire mesh drawers, 490W x 600D x 900H nom, 4 drawers
MMTR-053	TROLLEY: airway/intubation, 750W x 490D x 900H nom
MMTR-092	TROLLEY: procedure, 600W x 490D x 900H nom
WLF-002	WALL FINISH: paint, clinical areas
WLF-011.06	WALL FINISH: vinyl, to 2100 AFFL
WLF-101	SPLASHBACK: vinyl
WLPR-046.03	WALL PROTECTION: crash rail, to 900 AFFL

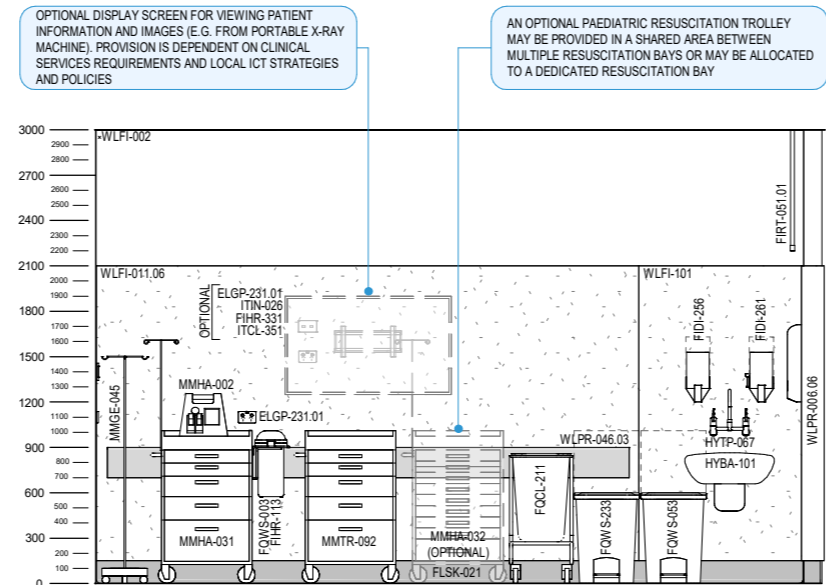
**PENDANT SERVICES HEAD**

Code	Description	Count
ELGP-151	GPO: single, emergency power, on pendant services head	10
ELGP-181	GPO: single, UPS, on pendant services head	4
ELPR-034	PANEL: UPS status indicator, on pendant services head	1
FIHR-104	BRACKET: suction bottle, on pendant services head	3
FIHR-414	BRACKET: patient monitor, articulated, on pendant services head	1
FIHR-423	BRACKET: ventilator, on pendant services head	1
ITCL-135	BUTTON: nurse call, patient to staff call, with cancel, with handset connection point, on pendant services head	1
ITCL-185	BUTTON: nurse call, staff assist, with cancel, on pendant services head	1
ITCL-195	BUTTON: nurse call, emergency, with cancel, on pendant services head	1
ITCL-251	HANDSET: nurse call, patient to staff call	1
ITIN-014	OUTLET: data, single RJ45, on pendant services head	1
ITIN-034	OUTLET: data, triple RJ45, on pendant services head	2
ITIN-066	OUTLET: data, HDMI, wall mounted	1
MGAS-021	OUTLET: medical air, on pendant services head	1
MGAS-031	OUTLET: nitrous oxide (N2O), on pendant services head	1
MGAS-041	OUTLET: oxygen (O2), on pendant services head	3
MGAS-051	OUTLET: scavenge, on pendant services head	1
MGAS-061	OUTLET: suction, on pendant services head	3
MGFP-021	FLOWMETER: medical air	1
MGFP-041	FLOWMETER: oxygen	3
MGFP-051	ADAPTER: scavenge	1
MGFP-061	ADAPTER: suction	3
MMGE-191	CANNISTER: suction bottle	3
MMGE-235	DIAGNOSTIC SET: otoscope and ophthalmoscope, on pendant services head	1
MMGE-291	DEVICE: pump, infusion, single	1
MMGE-296	DEVICE: pump, syringe	1
MMHA-051	DEVICE: ventilator, adult	1
MMPM-021	MONITOR: patient, high acuity	1
MMSP-111	PENDANT: single arm, ceiling mounted	1
MMSP-171	MEDICAL SERVICES HEAD: vertical, on pendant arm	1

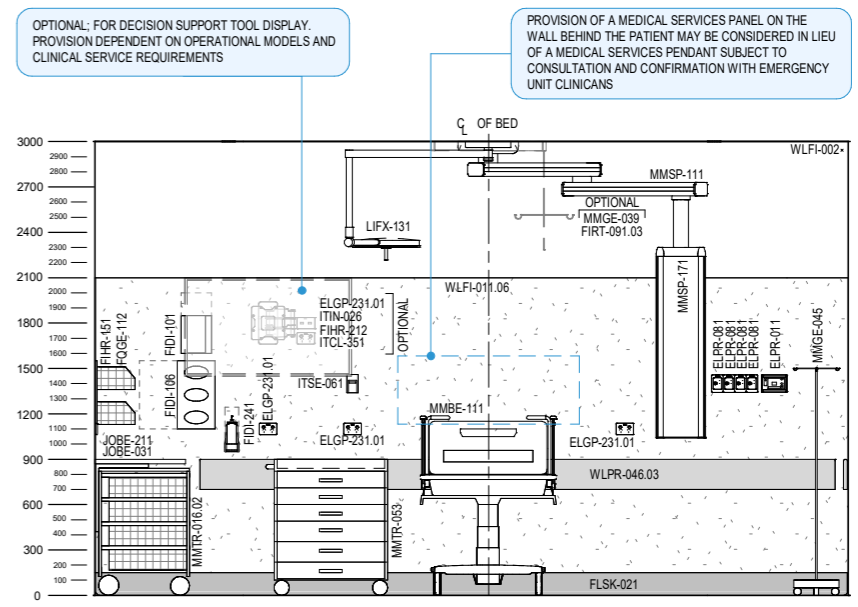
PROVISION OF RETICULATED NITROUS OXIDE IS OPTIONAL AND MUST BE CONFIRMED TO SUIT LOCAL JURISDICTIONAL POLICIES AND OPERATIONAL SERVICE REQUIREMENTS. REFER TO THE ROOM DATA SHEET FOR MORE INFORMATION.



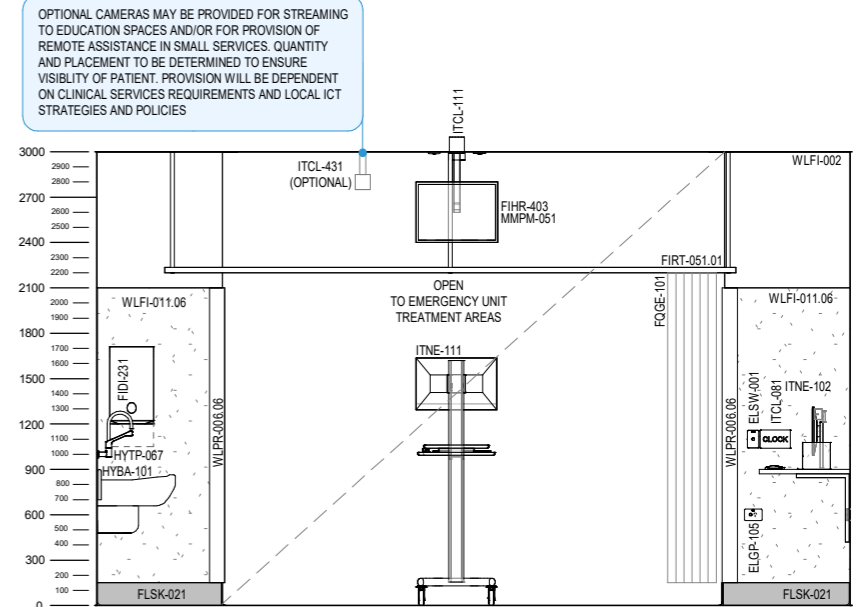
**ELEVATION 1**



**ELEVATION 3**

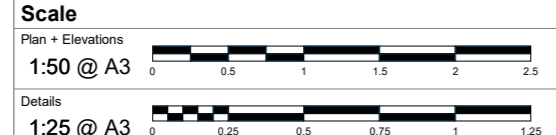


**ELEVATION 2**



**ELEVATION 4**

**FOR GUIDANCE**



Revision	Description	Date	Room Code
8	Redocumented in new RLS format with panorama	31.03.2026	PTB-E-RES
7	Updated following AHIA review	18.08.2025	
6	Updated following AHIA review	29.05.2019	
5	Item coding and naming updated	20.03.2017	

Revision: 8