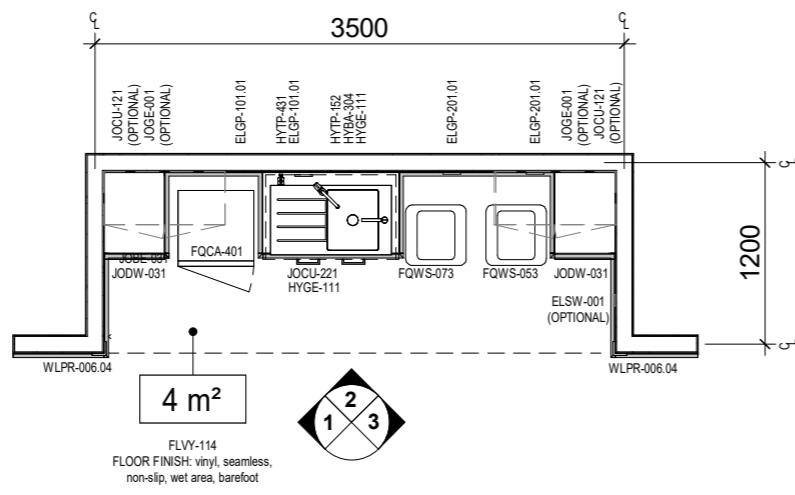


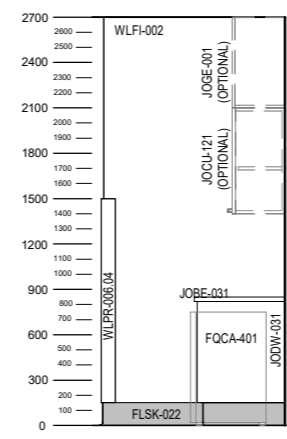


CODE	DESCRIPTION
ELGP-101.01	GPO: single, wall mounted, horizontal
ELGP-201.01	GPO: double, wall mounted, horizontal
ELSW-001	SWITCH: light
FLSK-022	SKIRTING: vinyl, integral with floor vinyl, coved, tamper proof, anti-ligature
FLVY-114	FLOOR FINISH: vinyl, seamless, non-slip, wet area, barefoot
FQCA-401	FRIDGE: domestic, 120L nom, single door, under bench
FQWS-053	BIN: general waste, 50L
FQWS-073	BIN: recycling, commingled, 50L
HYBA-304	SINK: single bowl, with drainer, accessible
HYGE-111	WATER SYSTEM: filter unit and tap, boiling/chilled
HYTP-152	TAPWARE: sink, mixer, fixture mounted, accessible
HYTP-431	OUTLET: water, cold
JOBE-031	BENCH: 600D, laminate
JOCU-121	CUPBOARD: wall mounted, double door
JOCU-221	CUPBOARD: under bench, double door
JODW-031	DRAWER UNIT: under bench, 3 drawers, equal
JOGE-001	BULKHEAD: joinery
WLFI-002	WALL FINISH: paint, clinical areas
WLFI-101	SPLASHBACK: vinyl
WLPR-006.04	WALL PROTECTION: corner guards, to 1500 AFFL

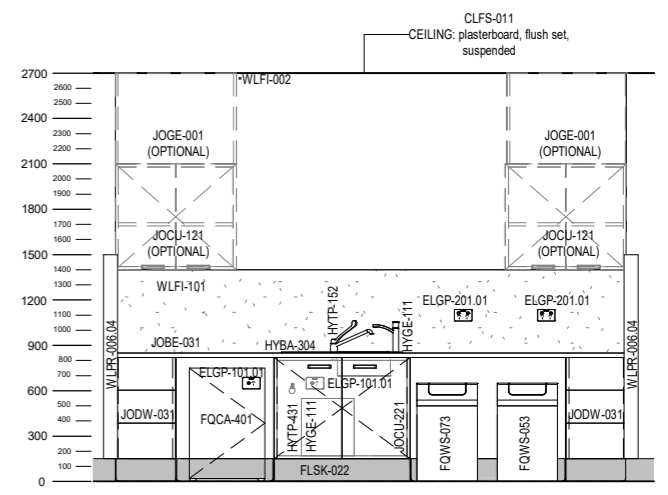
REQUIREMENTS FOR THE SELECTION OF SUITABLE FINISHES, HARDWARE, FIXTURES AND FITTINGS OF THE TYPE MANUFACTURED AND MARKETED AS TAMPER PROOF AND ANTI-LIGATURE, INCLUDING ANY WEIGHT LIMITS FOR COLLAPSING/BREAKING STRAIN FOR FIXTURES, MUST BE CONFIRMED AT PROJECT LEVEL BASED ON LOCAL PATIENT SAFETY POLICIES, LOCAL DESIGN GUIDANCE, RISK ASSESSMENTS AND CONFIRMATION OF OPERATIONAL MODELS. ALL TAMPER PROOF AND ANTI-LIGATURE ITEMS MUST BE INSTALLED IN ACCORDANCE WITH THEIR MANUFACTURER'S INSTRUCTIONS.



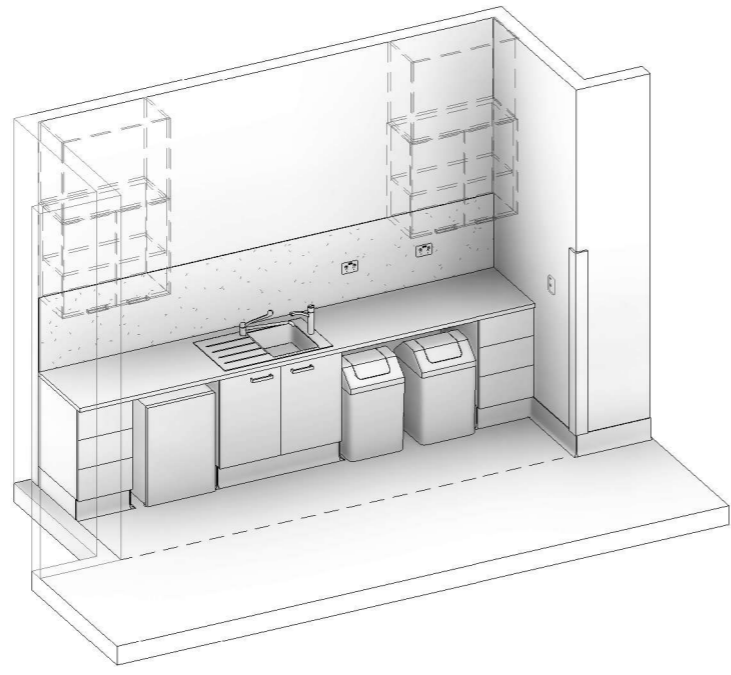
PLAN



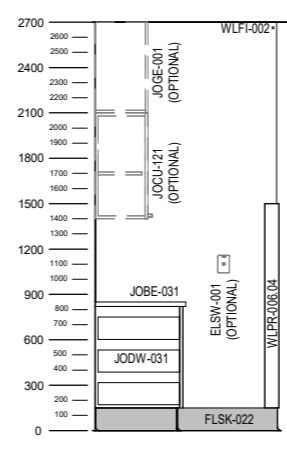
ELEVATION 1



ELEVATION 2



3D VIEW



ELEVATION 3