

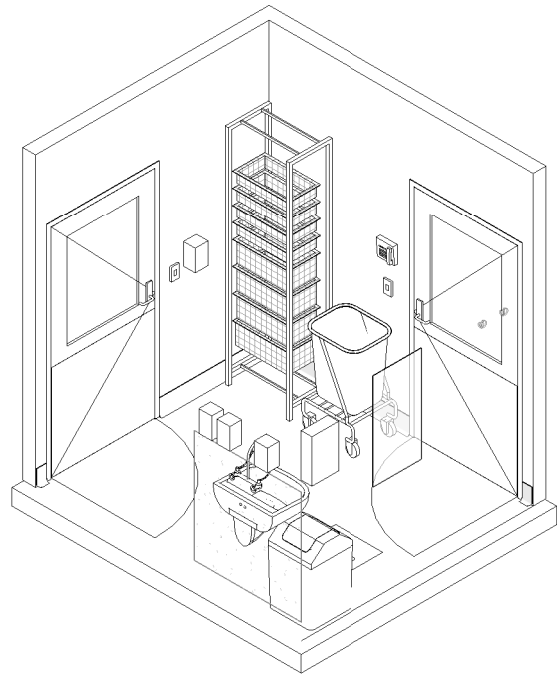
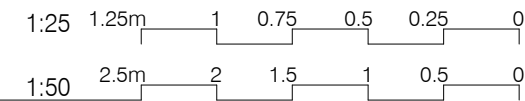
AUSTRALASIAN HFG STANDARD COMPONENTS

Room Layout Sheet

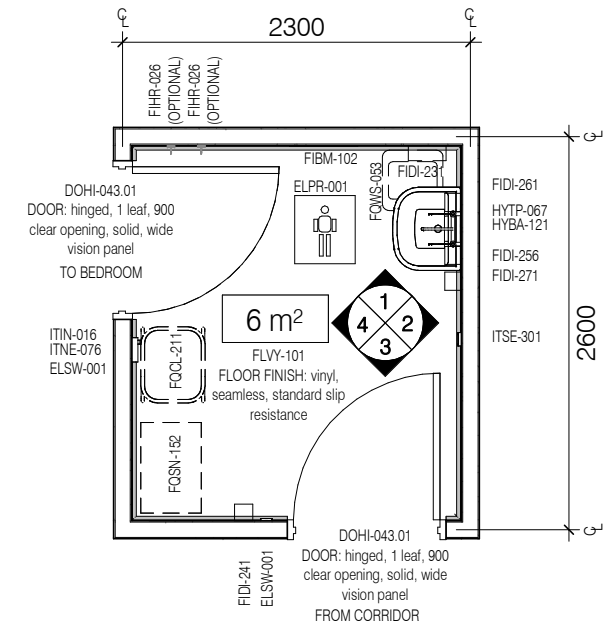
RLS Room Code: ANTE

Room Name:

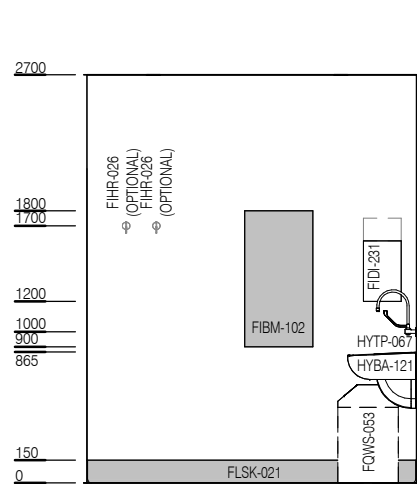
ANTEROOM



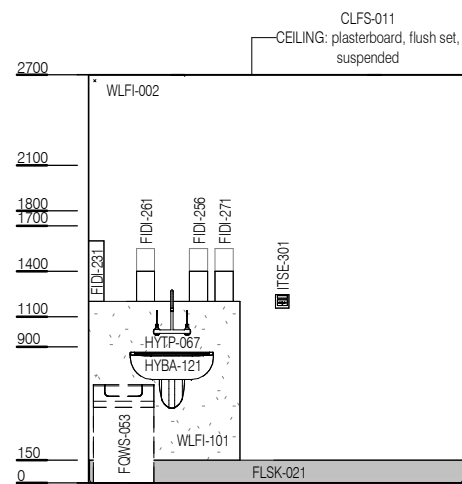
CODE	DESCRIPTION
AFDPR-006.01	DOOR PROTECTION: plate, to 900H
AFDPR-006.01	DOOR PROTECTION: plate, to 900H
DOHI-043.01	DOOR: hinged, 1 leaf, 900 clear opening, solid, wide vision panel
ELPR-001	BODY PROTECTED ELECTRICAL AREA
ELSW-001	SWITCH: light
FIBM-102	MIRROR: fixed, safety glass, frameless
FIDI-231	DISPENSER: paper towel, wall mounted
FIDI-241	DISPENSER: alcohol-based hand rub, wall mounted
FIDI-256	DISPENSER: soap, wall mounted
FIDI-261	DISPENSER: soap, antiseptic, wall mounted
FIDI-271	DISPENSER: moisturiser
FIHR-026	HOOK: coat
FLSK-021	SKIRTING: vinyl, integral with floor vinyl, coved
FLSK-021	SKIRTING: vinyl, integral with floor vinyl, coved
FLVY-101	FLOOR FINISH: vinyl, seamless, standard slip resistance
FQCL-211	LINEN CARRIER: dirty, single skip
FQSN-152	STORAGE SOLUTION: modular system, floor standing, 400D x 600W x 2100H nominal
FQWS-053	BIN: general waste, 50L
HYBA-121	BASIN: type B, handwashing
HYTP-067	TAPWARE: basin, tap set, wall mounted, lever handles
ITIN-016	OUTLET: data, single RJ45, wall mounted
ITNE-076	TELEPHONE: handset, wall mounted
ITSE-301	ALARM: door release, emergency, break glass, wall mounted
WLF-002	WALL FINISH: paint, clinical areas
WLF-101	SPLASHBACK: vinyl



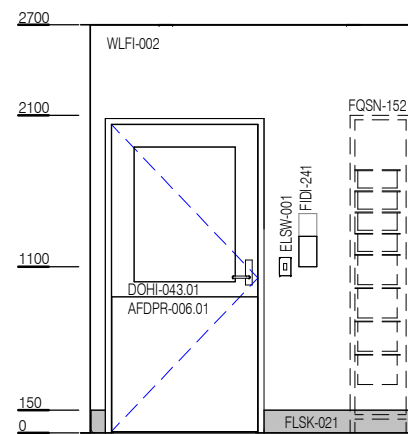
PLAN



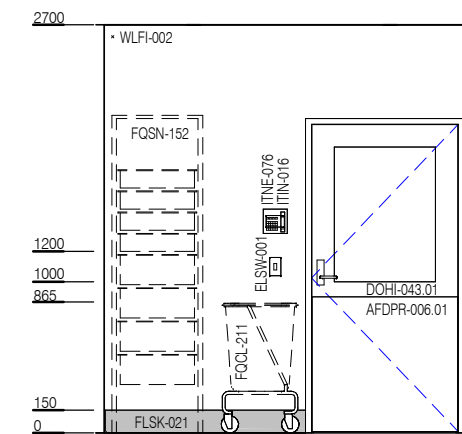
ELEVATION 1



ELEVATION 2



ELEVATION 3



ELEVATION 4

REV	DESCRIPTION	DATE
6	UPDATE FOLLOWING AHIA REVIEW	15/12/2025

FOR GUIDANCE

SCALE	RLS Room Code	REV
1 : 50 @ A3	ANTE	6