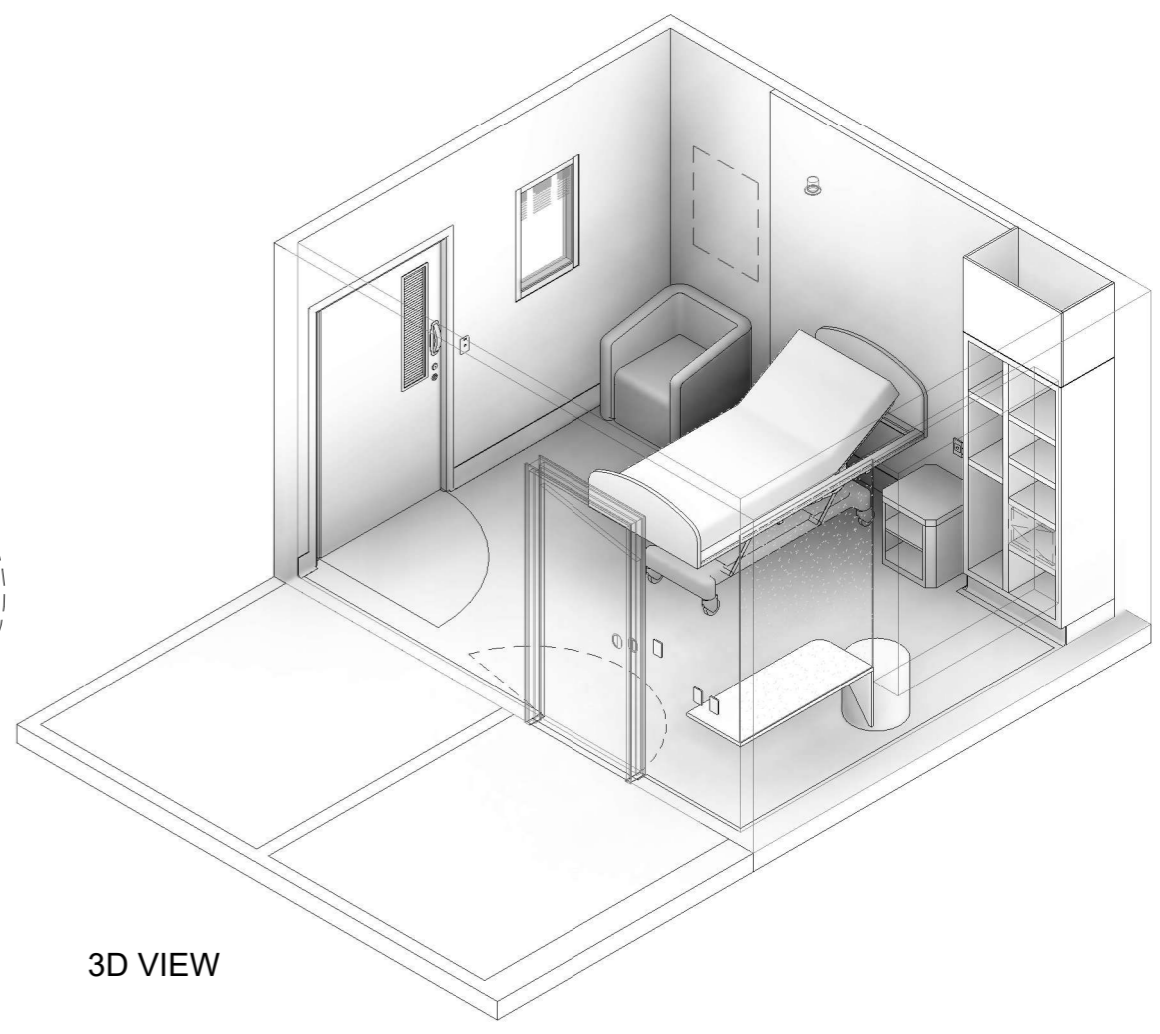
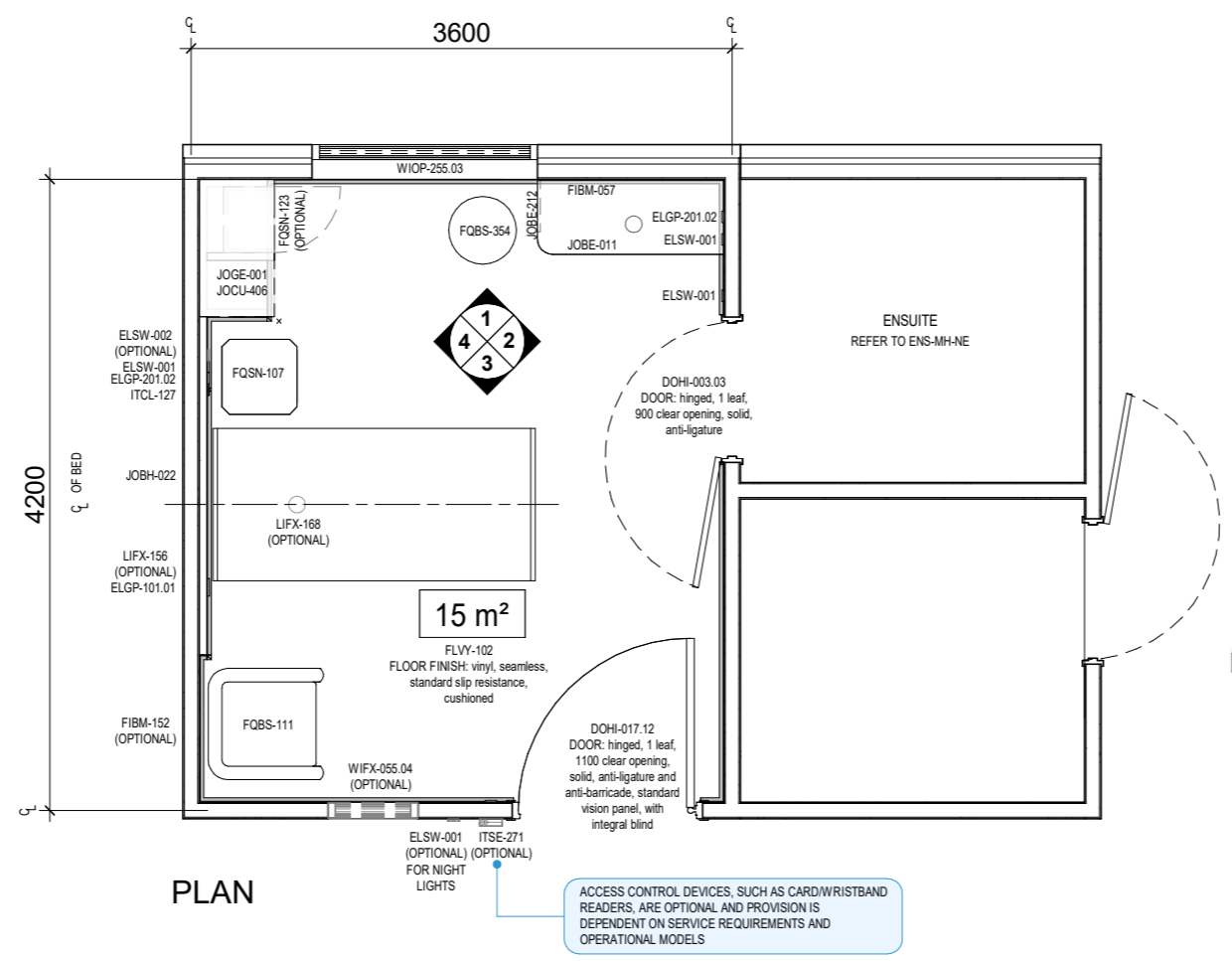




CODE	DESCRIPTION
DOHI-017.12	DOOR: hinged, 1 leaf, 1100 clear opening, solid, anti-ligature and anti-barricade, standard vision panel, with integral blind
ELGP-101.01	GPO: single, wall mounted, horizontal
ELGP-201.02	GPO: double, wall mounted, vertical
ELSW-001	SWITCH: light
ELSW-002	SWITCH: light, 2-gang
FIBM-057	NOTICE BOARD: fixed, fabric covered, tamper proof, anti-ligature
FIBM-152	MIRROR: fixed, safety glass, toughened and laminated, frameless, tamper proof, anti-ligature
FLSK-021	SKIRTING: vinyl, integral with floor vinyl, coved
FLSK-022	SKIRTING: vinyl, integral with floor vinyl, coved, tamper proof, anti-ligature
FLVY-102	FLOOR FINISH: vinyl, seamless, standard slip resistance, cushioned
FQBS-111	CHAIR: visitor, mental health
FQBS-354	LOUNGE: ottoman
FQSN-107	BEDSIDE TABLE: fixed, patient locker, tamper proof, anti-ligature
FQSN-123	SAFE: small, integral to joinery
ITCL-127	BUTTON: nurse call, patient to staff call, with cancel, joinery mounted
JOBE-011	BENCH: 500D, laminate
JOBE-212	BENCH SUPPORT: bracket, tamper proof, anti-ligature
JOBH-022	BEDHEAD: full height, tamper proof, anti-ligature
JOCU-406	WARDROBE: built-in, open, fixed shelves, tamper proof, anti-ligature
JOGE-001	BULKHEAD: joinery
LIFX-156	LIGHT: night, wall recessed, tamper proof, anti-ligature
LIFX-168	LIGHT: reading, ceiling recessed, tamper proof, anti-ligature
MMBE-141	BED: patient, electric, with mattress, mental health
WIFX-055.04	WINDOW: fixed, internal, double glazed, sill at 600H, with integral blind
WIOP-255.03	WINDOW: operable, jockey sash, external, double glazed, sill at 600H, with integral blind, tamper proof, anti-ligature
WLF1-002	WALL FINISH: paint, clinical areas
WLPR-002	WALL PROTECTION: bedhead wall panel, low height

REQUIREMENTS FOR THE SELECTION OF SUITABLE FINISHES, HARDWARE, FIXTURES AND FITTINGS OF THE TYPE MANUFACTURED AND MARKETED AS TAMPER PROOF AND ANTI-LIGATURE (INCLUDING ANY WEIGHT LIMITS FOR COLLAPSING/BREAKING) MUST BE CONFIRMED AT PROJECT LEVEL BASED ON LOCAL PATIENT SAFETY POLICIES AND DESIGN GUIDANCE, RISK ASSESSMENTS AND CONFIRMATION OF OPERATIONAL MODELS. ALL TAMPER PROOF AND ANTI-LIGATURE ITEMS MUST BE INSTALLED IN ACCORDANCE WITH THEIR MANUFACTURER'S INSTRUCTIONS.

LEAKAGE PROTECTION DEVICES (LPDs) SUCH AS RESIDUAL CURRENT DEVICES (RCDs) THAT COVER THE ELECTRICAL SERVICES WITHIN THIS SPACE ARE ASSUMED TO BE PROVIDED IN A CENTRAL AREA WITHIN THE UNIT (E.G. AT A STAFF STATION). LOCATION TO BE CONFIRMED AT PROJECT LEVEL.



Scale
Plan + Elevations
1:50 @ A3
Details
1:25 @ A3

FOR GUIDANCE

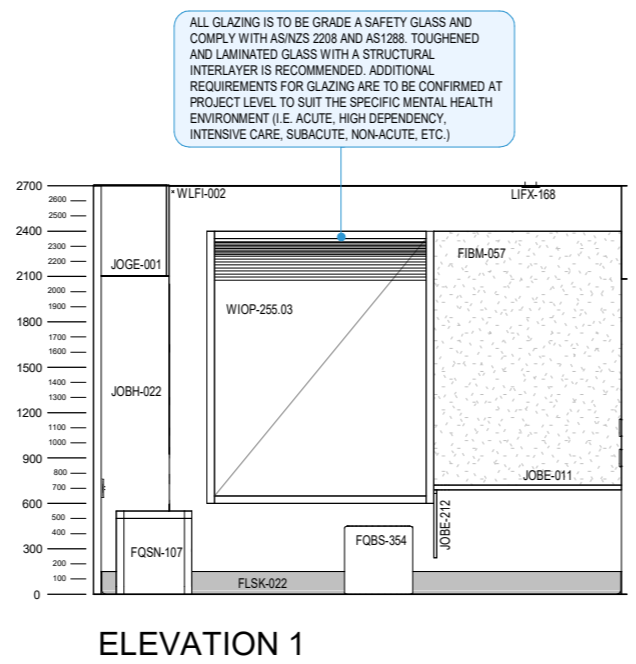
Revision	Description	Date	Room Code
7	Redocumented in new RLS format with panorama	31.03.2026	1BR-MH-NE
6	Updated following AHIA review	20.08.2025	Revision 7
5	Updated following AHIA review	02.07.2018	
4	Item coding and naming updated	20.03.2017	



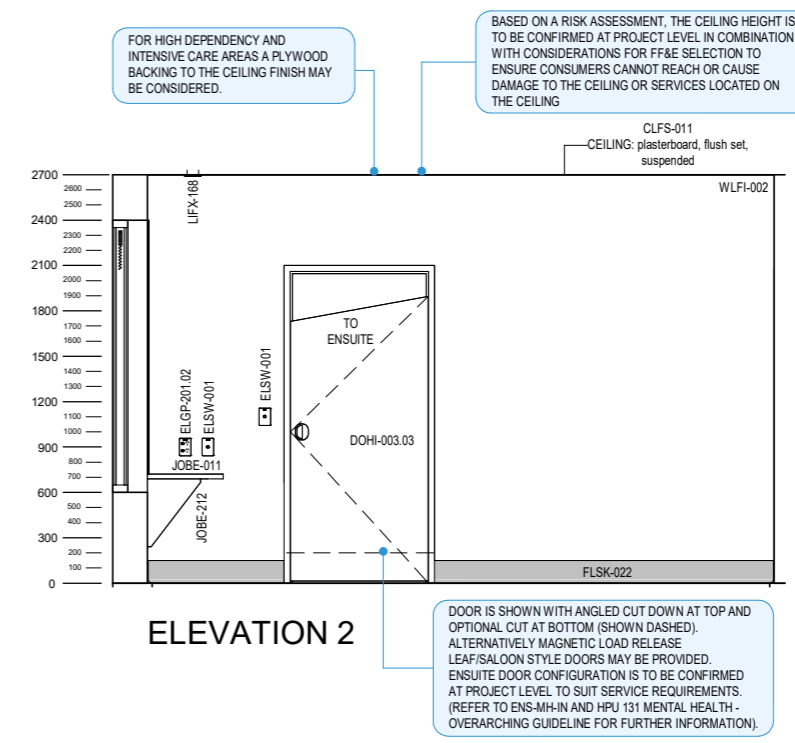
CODE	DESCRIPTION
DOHI-017.12	DOOR: hinged, 1 leaf, 1100 clear opening, solid, anti-ligature and anti-barricade, standard vision panel, with integral blind
ELGP-101.01	GPO: single, wall mounted, horizontal
ELGP-201.02	GPO: double, wall mounted, vertical
ELSW-001	SWITCH: light
ELSW-002	SWITCH: light, 2-gang
FIBM-057	NOTICE BOARD: fixed, fabric covered, tamper proof, anti-ligature
FIBM-152	MIRROR: fixed, safety glass, toughened and laminated, frameless, tamper proof, anti-ligature
FLSK-021	SKIRTING: vinyl, integral with floor vinyl, coved
FLSK-022	SKIRTING: vinyl, integral with floor vinyl, coved, tamper proof, anti-ligature
FLVY-102	FLOOR FINISH: vinyl, seamless, standard slip resistance, cushioned
FQBS-111	CHAIR: visitor, mental health
FQBS-354	LOUNGE: ottoman
FQSN-107	BEDSIDE TABLE: fixed, patient locker, tamper proof, anti-ligature
FQSN-123	SAFE: small, integral to joinery
ITCL-127	BUTTON: nurse call, patient to staff call, with cancel, joinery mounted
JOBE-011	BENCH: 500D, laminate
JOBE-212	BENCH SUPPORT: bracket, tamper proof, anti-ligature
JOBH-022	BEDHEAD: full height, tamper proof, anti-ligature
JOCU-406	WARDROBE: built-in, open, fixed shelves, tamper proof, anti-ligature
JOGE-001	BULKHEAD: joinery
LIFX-156	LIGHT: night, wall recessed, tamper proof, anti-ligature
LIFX-168	LIGHT: reading, ceiling recessed, tamper proof, anti-ligature
MMBE-141	BED: patient, electric, with mattress, mental health
WIFX-055.04	WINDOW: fixed, internal, double glazed, sill at 600H, with integral blind
WIOP-255.03	WINDOW: operable, jockey sash, external, double glazed, sill at 600H, with integral blind, tamper proof, anti-ligature
WLFI-002	WALL FINISH: paint, clinical areas
WLPR-002	WALL PROTECTION: bedhead wall panel, low height

REQUIREMENTS FOR THE SELECTION OF SUITABLE FINISHES, HARDWARE, FIXTURES AND FITTINGS OF THE TYPE MANUFACTURED AND MARKETED AS TAMPER PROOF AND ANTI-LIGATURE (INCLUDING ANY WEIGHT LIMITS FOR COLLAPSING/BREAKING) MUST BE CONFIRMED AT PROJECT LEVEL BASED ON LOCAL PATIENT SAFETY POLICIES AND DESIGN GUIDANCE, RISK ASSESSMENTS AND CONFIRMATION OF OPERATIONAL MODELS. ALL TAMPER PROOF AND ANTI-LIGATURE ITEMS MUST BE INSTALLED IN ACCORDANCE WITH THEIR MANUFACTURER'S INSTRUCTIONS.

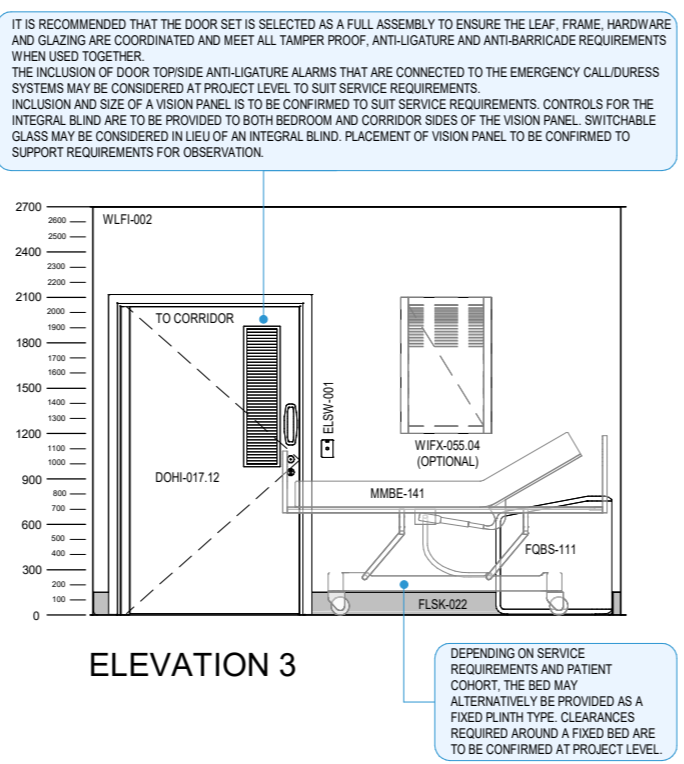
LEAKAGE PROTECTION DEVICES (LPDs) SUCH AS RESIDUAL CURRENT DEVICES (RCDs) THAT COVER THE ELECTRICAL SERVICES WITHIN THIS SPACE ARE ASSUMED TO BE PROVIDED IN A CENTRAL AREA WITHIN THE UNIT (E.G. AT A STAFF STATION). LOCATION TO BE CONFIRMED AT PROJECT LEVEL.



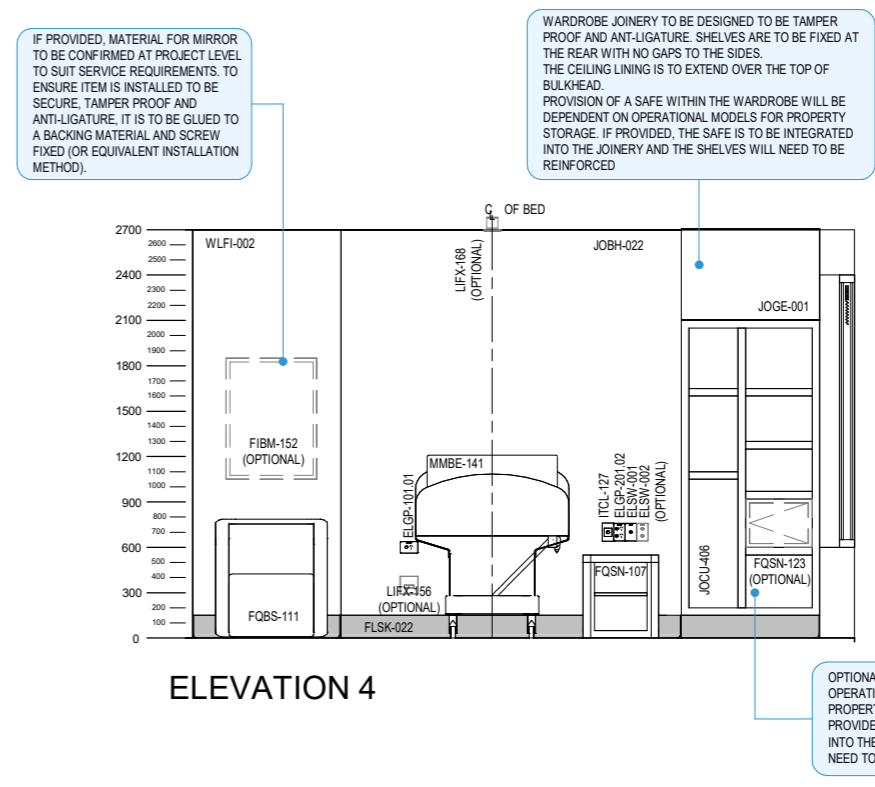
ELEVATION 1



ELEVATION 2



ELEVATION 3



ELEVATION 4

Scale

Plan + Elevations
1:50 @ A3

Details
1:25 @ A3

FOR GUIDANCE

Revision	Description	Date	Room Code
7	Redocumented in new RLS format with panorama	31.03.2026	1BR-MH-NE
6	Updated following AHIA review	20.08.2025	Revision
5	Updated following AHIA review	02.07.2018	
4	Item coding and naming updated	20.03.2017	7

