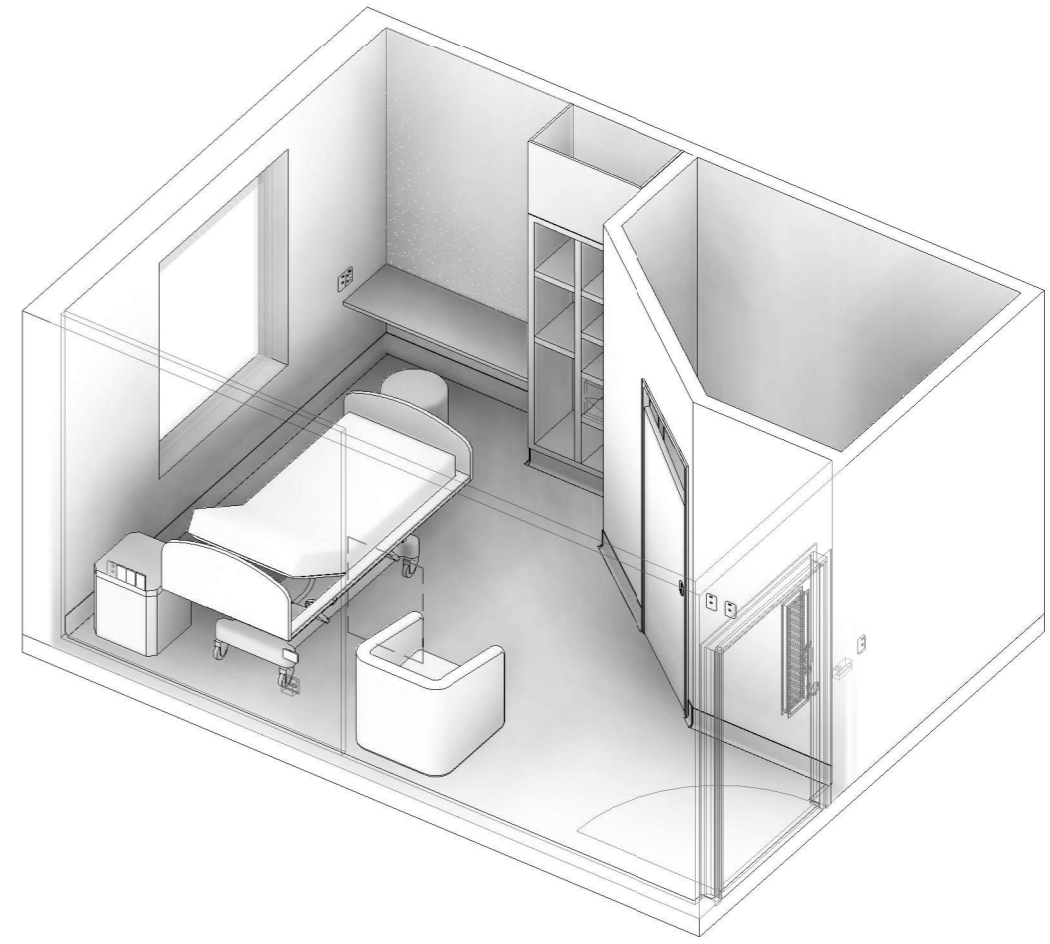
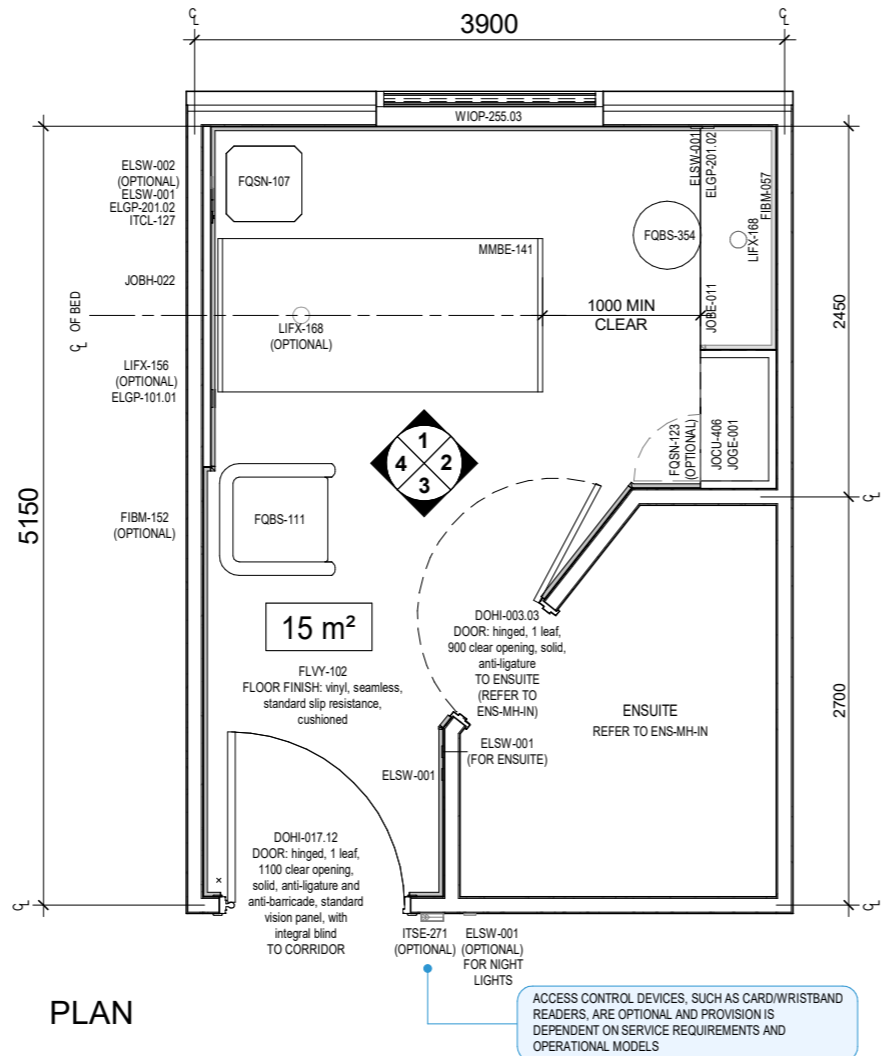




CODE	DESCRIPTION
DOHI-017.12	DOOR: hinged, 1 leaf, 1100 clear opening, solid, anti-ligature and anti-barricade, standard vision panel, with integral blind
ELGP-101.01	GPO: single, wall mounted, horizontal
ELGP-201.02	GPO: double, wall mounted, vertical
ELSW-001	SWITCH: light
ELSW-002	SWITCH: light, 2-gang
FIBM-057	NOTICE BOARD: fixed, fabric covered, tamper proof, anti-ligature
FIBM-152	MIRROR: fixed, safety glass, toughened and laminated, frameless, tamper proof, anti-ligature
FLSK-021	SKIRTING: vinyl, integral with floor vinyl, covered
FLSK-022	SKIRTING: vinyl, integral with floor vinyl, covered, tamper proof, anti-ligature
FLVY-102	FLOOR FINISH: vinyl, seamless, standard slip resistance, cushioned
FQBS-111	CHAIR: visitor, mental health
FQBS-354	LOUNGE: ottoman
FQSN-107	BEDSIDE TABLE: fixed, patient locker, tamper proof, anti-ligature
FQSN-123	SAFE: small, integral to joinery
ITCL-127	BUTTON: nurse call, patient to staff call, with cancel, joinery mounted
JOBE-011	BENCH: 500D, laminate
JOBH-022	BEDHEAD: full height, tamper proof, anti-ligature
JOCU-406	WARDROBE: built-in, open, fixed shelves, tamper proof, anti-ligature
JOGE-001	BULKHEAD: joinery
LIFX-156	LIGHT: night, wall recessed, tamper proof, anti-ligature
LIFX-168	LIGHT: reading, ceiling recessed, tamper proof, anti-ligature
MMBE-141	BED: patient, electric, with mattress, mental health
WIOP-255.03	WINDOW: operable, jockey sash, external, double glazed, sill at 600H, with integral blind, tamper proof, anti-ligature
WLF1-002	WALL FINISH: paint, clinical areas
WLPR-002	WALL PROTECTION: bedhead wall panel, low height

REQUIREMENTS FOR THE SELECTION OF SUITABLE FINISHES, HARDWARE, FIXTURES AND FITTINGS OF THE TYPE MANUFACTURED AND MARKETED AS TAMPER PROOF AND ANTI-LIGATURE (INCLUDING ANY WEIGHT LIMITS FOR COLLAPSING/BREAKING) MUST BE CONFIRMED AT PROJECT LEVEL BASED ON LOCAL PATIENT SAFETY POLICIES AND DESIGN GUIDANCE, RISK ASSESSMENTS AND CONFIRMATION OF OPERATIONAL MODELS. ALL TAMPER PROOF AND ANTI-LIGATURE ITEMS MUST BE INSTALLED IN ACCORDANCE WITH THEIR MANUFACTURER'S INSTRUCTIONS.

LEAKAGE PROTECTION DEVICES (LPDs) SUCH AS RESIDUAL CURRENT DEVICES (RCDs) THAT COVER THE ELECTRICAL SERVICES WITHIN THIS SPACE ARE ASSUMED TO BE PROVIDED IN A CENTRAL AREA WITHIN THE UNIT (E.G. AT A STAFF STATION). LOCATION TO BE CONFIRMED AT PROJECT LEVEL.



PLAN

3D VIEW

FOR GUIDANCE

Scale

Plan + Elevations
1:50 @ A3

Details
1:25 @ A3

Revision	Description	Date	Room Code
7	Redocumented in new RLS format with panorama	31.03.2026	1BR-MH-IN
6	Updated following AHIA review	20.08.2025	Revision 7
5	Updated following AHIA review	02.07.2018	
4	Item coding and naming updated	20.03.2017	



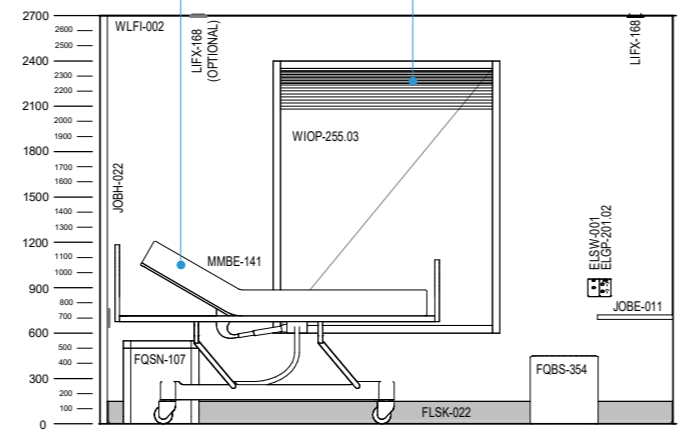


CODE	DESCRIPTION
DOHI-017.12	DOOR: hinged, 1 leaf, 1100 clear opening, solid, anti-ligature and anti-barricade, standard vision panel, with integral blind
ELGP-101.01	GPO: single, wall mounted, horizontal
ELGP-201.02	GPO: double, wall mounted, vertical
ELSW-001	SWITCH: light
ELSW-002	SWITCH: light, 2-gang
FIBM-057	NOTICE BOARD: fixed, fabric covered, tamper proof, anti-ligature
FIBM-152	MIRROR: fixed, safety glass, toughened and laminated, frameless, tamper proof, anti-ligature
FLSK-021	SKIRTING: vinyl, integral with floor vinyl, coved
FLSK-022	SKIRTING: vinyl, integral with floor vinyl, coved, tamper proof, anti-ligature
FLVY-102	FLOOR FINISH: vinyl, seamless, standard slip resistance, cushioned
FQBS-111	CHAIR: visitor, mental health
FQBS-354	LOUNGE: ottoman
FQSN-107	BEDSIDE TABLE: fixed, patient locker, tamper proof, anti-ligature
FQSN-123	SAFE: small, integral to joinery
ITCL-127	BUTTON: nurse call, patient to staff call, with cancel, joinery mounted
JOBE-011	BENCH: 500D, laminate
JOBH-022	BEDHEAD: full height, tamper proof, anti-ligature
JOCU-406	WARDROBE: built-in, open, fixed shelves, tamper proof, anti-ligature
JOGE-001	BULKHEAD: joinery
LIFX-156	LIGHT: night, wall recessed, tamper proof, anti-ligature
LIFX-168	LIGHT: reading, ceiling recessed, tamper proof, anti-ligature
MMBE-141	BED: patient, electric, with mattress, mental health
WIOP-255.03	WINDOW: operable, jockey sash, external, double glazed, sill at 600H, with integral blind, tamper proof, anti-ligature
WLFJ-002	WALL FINISH: paint, clinical areas
WLPR-002	WALL PROTECTION: bedhead wall panel, low height

REQUIREMENTS FOR THE SELECTION OF SUITABLE FINISHES, HARDWARE, FIXTURES AND FITTINGS OF THE TYPE MANUFACTURED AND MARKETED AS TAMPER PROOF AND ANTI-LIGATURE (INCLUDING ANY WEIGHT LIMITS FOR COLLAPSING/BREAKING) MUST BE CONFIRMED AT PROJECT LEVEL BASED ON LOCAL PATIENT SAFETY POLICIES AND DESIGN GUIDANCE, RISK ASSESSMENTS AND CONFIRMATION OF OPERATIONAL MODELS. ALL TAMPER PROOF AND ANTI-LIGATURE ITEMS MUST BE INSTALLED IN ACCORDANCE WITH THEIR MANUFACTURERS INSTRUCTIONS.

LEAKAGE PROTECTION DEVICES (LPDs) SUCH AS RESIDUAL CURRENT DEVICES (RCDs) THAT COVER THE ELECTRICAL SERVICES WITHIN THIS SPACE ARE ASSUMED TO BE PROVIDED IN A CENTRAL AREA WITHIN THE UNIT (E.G. AT A STAFF STATION). LOCATION TO BE CONFIRMED AT PROJECT LEVEL.

ALL GLAZING IS TO BE GRADE A SAFETY GLASS AND COMPLY WITH AS/NZS 2208 AND AS1288. TOUGHENED AND LAMINATED GLASS WITH A STRUCTURAL INTERLAYER IS RECOMMENDED. ADDITIONAL REQUIREMENTS FOR GLAZING ARE TO BE CONFIRMED AT PROJECT LEVEL TO SUIT THE SPECIFIC MENTAL HEALTH ENVIRONMENT (I.E. ACUTE, HIGH DEPENDENCY, INTENSIVE CARE, SUBACUTE, NON-ACUTE, ETC.)

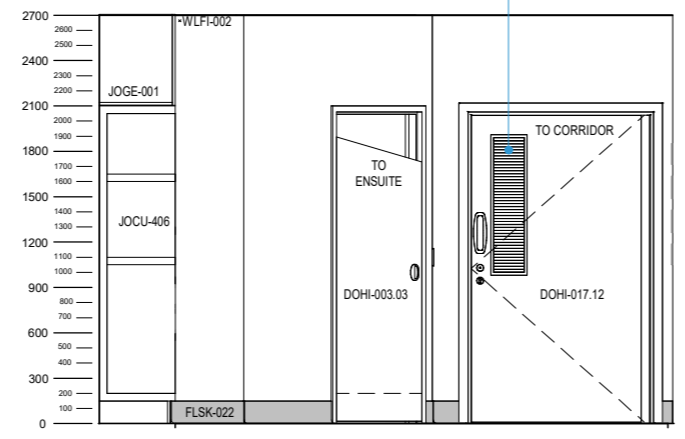


ELEVATION 1

IT IS RECOMMENDED THAT THE DOOR SET IS SELECTED AS A FULL ASSEMBLY TO ENSURE THE LEAF, FRAME, HARDWARE AND GLAZING ARE COORDINATED AND MEET ALL TAMPER PROOF, ANTI-LIGATURE AND ANTI-BARRICADE REQUIREMENTS WHEN USED TOGETHER.

THE INCLUSION OF DOOR TOPSIDE ANTI-LIGATURE ALARMS THAT ARE CONNECTED TO THE EMERGENCY CALL/DURESS SYSTEMS MAY BE CONSIDERED AT PROJECT LEVEL TO SUIT SERVICE REQUIREMENTS.

INCLUSION AND SIZE OF A VISION PANEL IS TO BE CONFIRMED TO SUIT SERVICE REQUIREMENTS. CONTROLS FOR THE INTEGRAL BLIND ARE TO BE PROVIDED TO BOTH BEDROOM AND CORRIDOR SIDES OF THE VISION PANEL. SWITCHABLE GLASS MAY BE CONSIDERED IN LIEU OF AN INTEGRAL BLIND. PLACEMENT OF VISION PANEL TO BE CONFIRMED TO SUPPORT REQUIREMENTS FOR OBSERVATION.

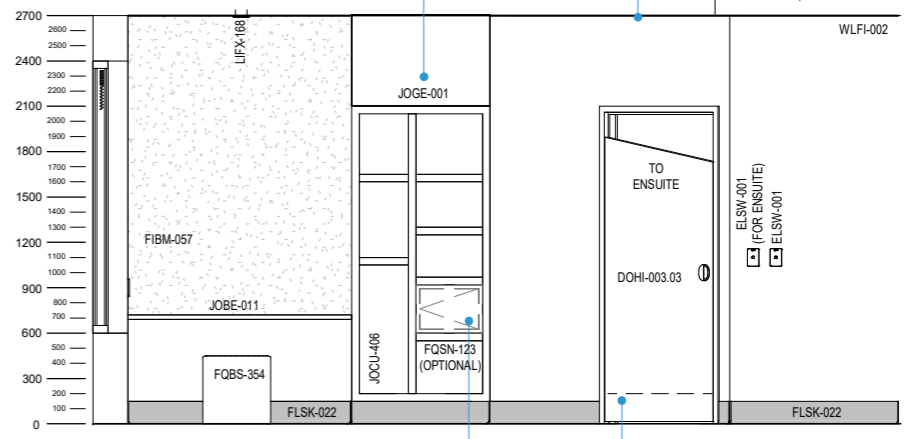


ELEVATION 3

WARDROBE JOINERY TO BE DESIGNED TO BE TAMPER PROOF AND ANTI-LIGATURE. SHELVES ARE TO BE FIXED AT THE REAR WITH NO GAPS TO THE SIDES. THE CEILING LINING IS TO EXTEND OVER THE TOP OF BULKHEAD.

PROVISION OF A SAFE WITHIN THE WARDROBE WILL BE DEPENDENT ON OPERATIONAL MODELS FOR PROPERTY STORAGE. IF PROVIDED, THE SAFE IS TO BE INTEGRATED INTO THE JOINERY AND THE SHELVES WILL NEED TO BE REINFORCED.

BASED ON A RISK ASSESSMENT, THE CEILING HEIGHT IS TO BE CONFIRMED AT PROJECT LEVEL IN COMBINATION WITH CONSIDERATIONS FOR FFBE SELECTION TO ENSURE CONSUMERS CANNOT REACH OR CAUSE DAMAGE TO THE CEILING OR SERVICES LOCATED ON THE CEILING.



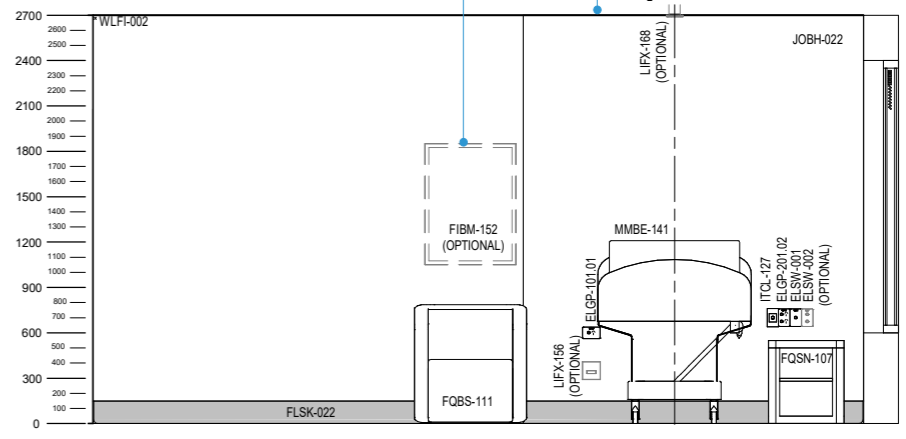
ELEVATION 2

OPTIONAL: PROVISION DEPENDENT ON OPERATIONAL MODELS FOR PROPERTY STORAGE. WHERE PROVIDED, SAFE IS TO BE INTEGRATED INTO THE JOINERY AND SHELVES WILL NEED TO BE REINFORCED.

DOOR IS SHOWN WITH ANGLED CUT DOWN AT TOP AND OPTIONAL CUT AT BOTTOM (SHOWN DASHED). ALTERNATIVELY MAGNETIC LOAD RELEASE LEAF/SALOON STYLE DOORS MAY BE PROVIDED. ENSUITE DOOR CONFIGURATION IS TO BE CONFIRMED AT PROJECT LEVEL TO SUIT SERVICE REQUIREMENTS. (REFER TO ENS-MH-IN AND HPU 131 MENTAL HEALTH - OVERARCHING GUIDELINE FOR FURTHER INFORMATION).

IF PROVIDED, MATERIAL FOR MIRROR TO BE CONFIRMED AT PROJECT LEVEL TO SUIT SERVICE REQUIREMENTS. TO ENSURE ITEM IS INSTALLED TO BE SECURE, TAMPER PROOF AND ANTI-LIGATURE, IT IS TO BE GLUED TO A BACKING MATERIAL AND SCREW FIXED (OR EQUIVALENT INSTALLATION METHOD).

FOR HIGH DEPENDENCY AND INTENSIVE CARE AREAS A PLYWOOD BACKING TO THE CEILING FINISH MAY BE CONSIDERED.



ELEVATION 4