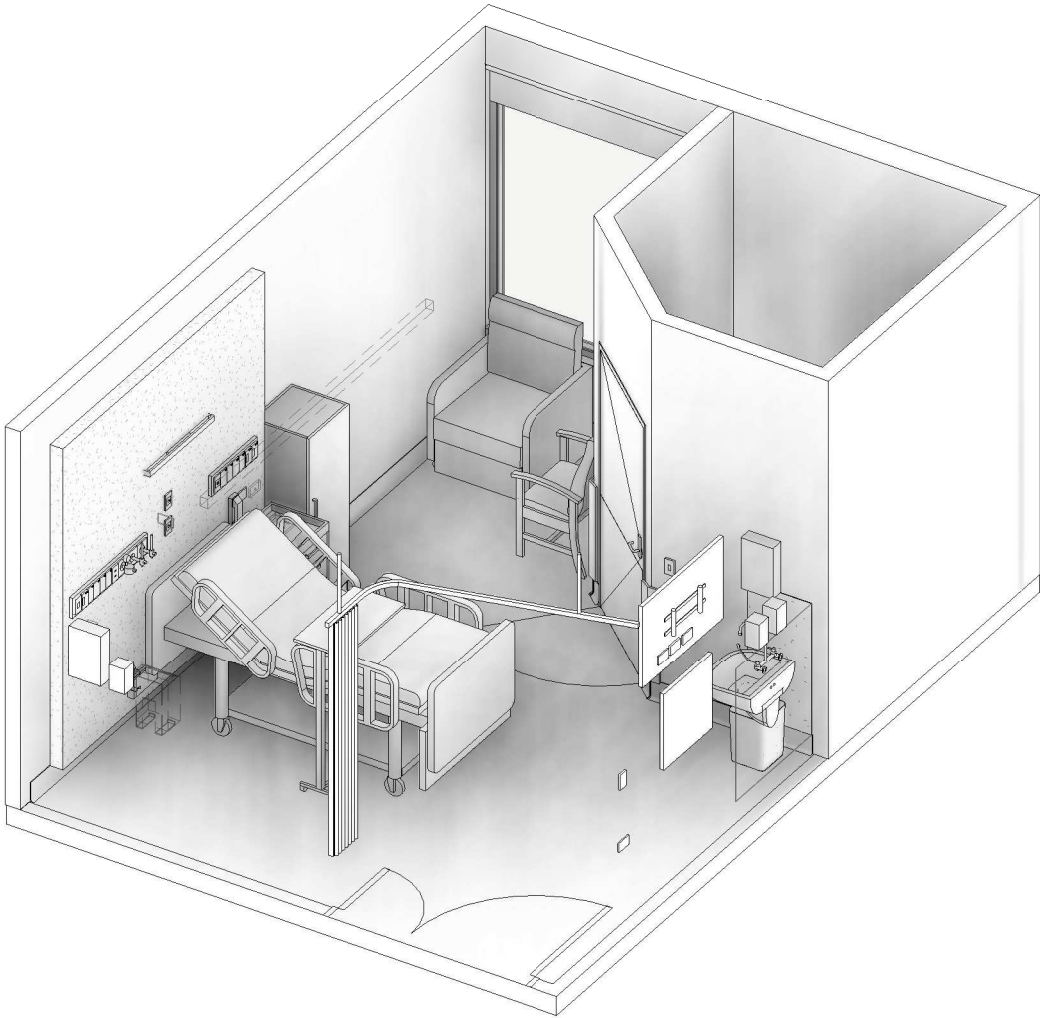


AUSTRALASIAN HFG STANDARD COMPONENTS

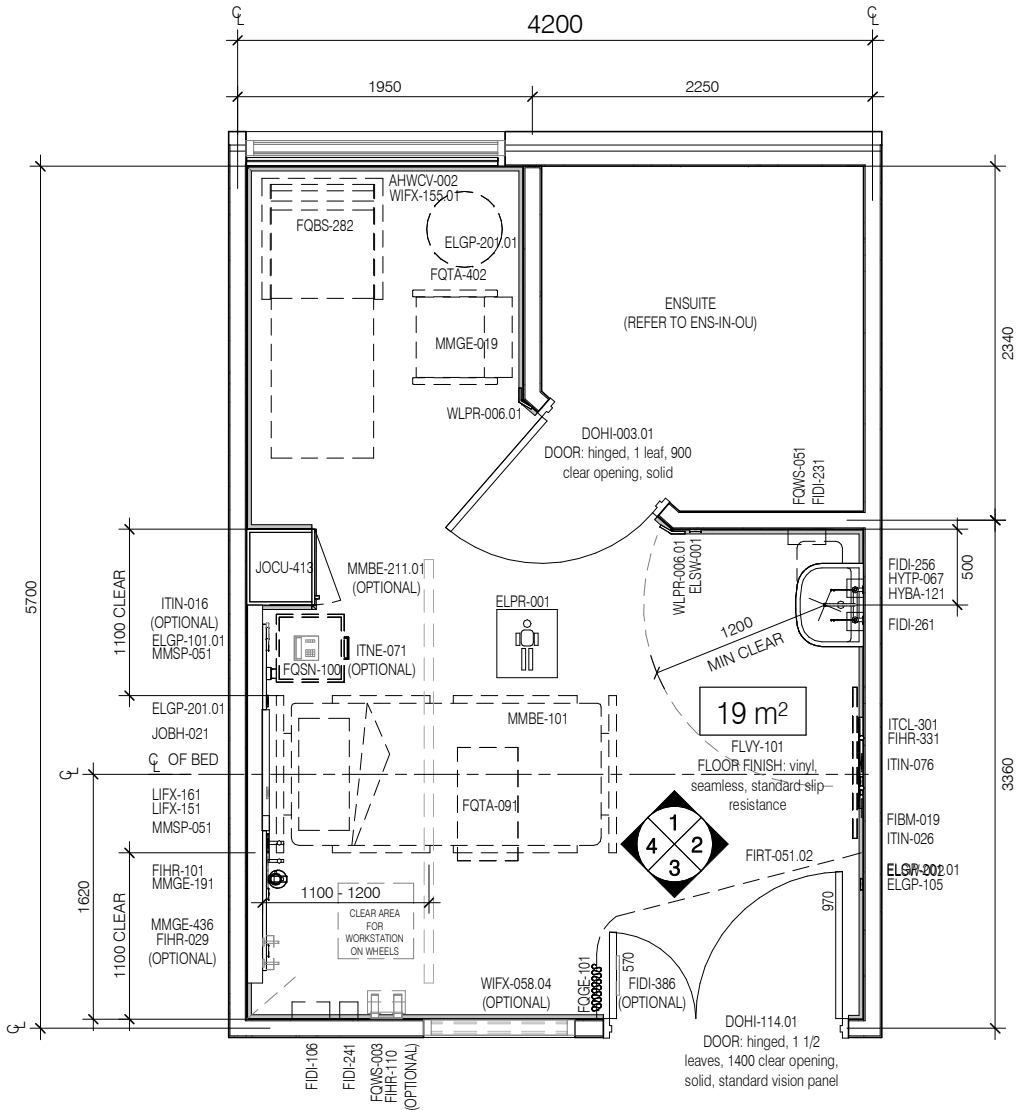
Room Layout Sheet

RLS Room Code: 1BR-CO-OU1

Room Name: 1 BED ROOM - CARERS OVERNIGHT, OUTBOARD ENSUITE, TYPE 1



CODE	DESCRIPTION
AFDPR-006.01	DOOR PROTECTION: plate, to 900H
AHWCV-002	WINDOW COVERING: blind, roller, double
ELGP-101.01	GPO: single, wall mounted, horizontal
ELGP-105	GPO: single, wall mounted, cleaner
ELGP-116	GPO: single, on service panel
ELGP-146	GPO: single, emergency power, on service panel
ELGP-201.01	GPO: double, wall mounted, horizontal
ELPR-001	BODY PROTECTED ELECTRICAL AREA
ELPR-073	RCD: residual current device, on services panel
ELPR-083	RCD: residual current device, emergency power, on services panel
ELSW-001	SWITCH: light
ELSW-002	SWITCH: light, 2-gang
FIBM-019	WHITEBOARD: fixed, magnetic
FIDI-106	DISPENSER: PPE, disposable gloves, wall mounted
FIDI-231	DISPENSER: paper towel, wall mounted
FIDI-241	DISPENSER: alcohol-based hand rub, wall mounted
FIDI-256	DISPENSER: soap, wall mounted
FIDI-261	DISPENSER: soap, antiseptic, wall mounted
FIDI-386	FRAME: document, A4, wall mounted
FIHR-029	HOOK: equipment
FIHR-101	BRACKET: suction bottle, wall mounted
FIHR-110	BRACKET: sharps bin, wall mounted
FIRT-051.02	TRACK: curtain, privacy, L shaped
FLSK-021	SKIRTING: vinyl, integral with floor vinyl, coved
FLVY-101	FLOOR FINISH: vinyl, seamless, standard slip resistance
FOBS-282	RECLINER: visitor, clinical areas, fold out bed
FOGE-101	CURTAIN: privacy screen
FQSN-100	BEDSIDE TABLE: floor standing, patient locker
FQTA-091	TABLE: overbed, mobile, height adjustable
FQTA-402	TABLE: round, 450H, 500 diameter
QWS-003	BIN: sharps, clinical, medium
QWS-051	BIN: general waste, 20L
HYBA-121	BASIN: type B, handwashing
HYTP-067	TAPWARE: basin, tap set, wall mounted, lever handles
ITCL-121	BUTTON: patient to staff call, with cancel, wall mounted
ITCL-181	BUTTON: staff assist, with cancel, wall mounted
ITCL-191	BUTTON: emergency, with cancel, wall mounted
ITCL-253	HANDSET: nurse call, patient to staff call, with light control, with patient entertainment system control, with speaker
ITCL-301	DISPLAY SCREEN: patient entertainment system
ITIN-016	OUTLET: data, single RJ45, wall mounted
ITIN-025	OUTLET: data, double RJ45, on services panel
ITIN-026	OUTLET: data, double RJ45, wall mounted
ITIN-076	OUTLET: MATV, wall mounted
ITNE-071	TELEPHONE: handset, desktop
JOBH-021	BEDHEAD: full height
JOCU-413	WARDROBE: built-in, single door, fixed shelves, clothing rail
LIFX-151	LIGHT: night, wall mounted
LIFX-161	LIGHT: reading, wall mounted
MGAS-022	OUTLET: medical air, on services panel
MGAS-042	OUTLET: oxygen (O2), on services panel
MGAS-062	OUTLET: suction, on services panel
MGFP-021	FLOWMETER: medical air
MGFP-041	FLOWMETER: oxygen
MGFP-061	ADAPTER: suction
MMBE-101	BED: patient, electric, with mattress
MMBE-211.01	LIFTER: patient, fixed track, ceiling mounted, straight
MMGE-019	CHAIR: patient
MMGE-191	CANNISTER: suction bottle
MMGE-436	KIT: emergency airway equipment, portable
MMSP-051	MEDICAL SERVICES PANEL: wall mounted
WIFX-058.04	WINDOW: fixed, internal, double glazed, sill at 1050H, with integral blind
WIFX-155.01	WINDOW: fixed, external, double glazed, sill at 600H
WLF-002	WALL FINISH: paint, clinical areas
WLF-101	SPLASHBACK: vinyl
WLPR-006.01	WALL PROTECTION: corner guards, to 900 AFFL



PLAN

Room Layout Sheet

Room Name:

1:25 1.25m 1 0.75 0.5 0.25 0

1:50 2.5m 2 1.5 1 0.5 0



CODE	DESCRIPTION
AFDPR-006.01	DOOR PROTECTION: plate, to 900H
AHWCV-002	WINDOW COVERING: blind, roller, double
ELGP-101.01	GPO: single, wall mounted, horizontal
ELGP-105	GPO: single, wall mounted, cleaner
ELGP-116	GPO: single, on service panel
ELGP-146	GPO: single, emergency power, on service panel
ELGP-201.01	GPO: double, wall mounted, horizontal
ELPR-001	BODY PROTECTED ELECTRICAL AREA
ELPR-073	RCD: residual current device, on services panel
ELPR-083	RCD: residual current device, emergency power, on services panel
ELSW-001	SWITCH: light
ELSW-002	SWITCH: light, 2-gang
FIBM-019	WHITEBOARD: fixed, magnetic
FIDI-106	DISPENSER: PPE, disposable gloves, wall mounted
FIDI-231	DISPENSER: paper towel, wall mounted
FIDI-241	DISPENSER: alcohol-based hand rub, wall mounted
FIDI-256	DISPENSER: soap, wall mounted
FIDI-261	DISPENSER: soap, antiseptic, wall mounted
FIDI-386	FRAME: document, A4, wall mounted
FIHR-029	HOOK: equipment
FIHR-101	BRACKET: suction bottle, wall mounted
FIHR-110	BRACKET: sharps bin, wall mounted
FIRT-051.02	TRACK: curtain, privacy, L shaped
FLSK-021	SKIRTING: vinyl, integral with floor vinyl, coved
FLYV-101	FLOOR FINISH: vinyl, seamless, standard slip resistance
FQBS-282	RECLINER: visitor, clinical areas, fold out bed
FQGE-101	CURTAIN: privacy screen
FQSN-100	BEDSIDE TABLE: floor standing, patient locker
FQTA-091	TABLE: overbed, mobile, height adjustable
FQTA-402	TABLE: round, 450H, 500 diameter
FQWS-003	BIN: sharps, clinical, medium
FQWS-051	BIN: general waste, 20L
HYBA-121	BASIN: type B, handwashing
HYTP-067	TAPWARE: basin, tap set, wall mounted, lever handles
ITCL-121	BUTTON: patient to staff call, with cancel, wall mounted
ITCL-181	BUTTON: staff assist, with cancel, wall mounted
ITCL-191	BUTTON: emergency, with cancel, wall mounted
ITCL-253	HANDSET: nurse call, patient to staff call, with light control, with patient entertainment system control, with speaker
ITCL-301	DISPLAY SCREEN: patient entertainment system
ITIN-016	OUTLET: data, single RJ45, wall mounted
ITIN-025	OUTLET: data, double RJ45, on services panel
ITIN-026	OUTLET: data, double RJ45, wall mounted
ITIN-076	OUTLET: MATV, wall mounted
ITNE-071	TELEPHONE: handset, desktop
JOHB-021	BEDHEAD: full height
JOCU-413	WARDROBE: built-in, single door, fixed shelves, clothing rail
LIFX-151	LIGHT: night, wall mounted
LIFX-161	LIGHT: reading, wall mounted
MGAS-022	OUTLET: medical air, on services panel
MGAS-042	OUTLET: oxygen (O2), on services panel
MGAS-062	OUTLET: suction, on services panel
MGFP-021	FLOWMETER: medical air
MGFP-041	FLOWMETER: oxygen
MGFP-061	ADAPTER: suction
MMBE-101	BED: patient, electric, with mattress
MMBE-211.01	LIFTER: patient, fixed track, ceiling mounted, straight
MMGE-019	CHAIR: patient
MMGE-191	CANNISTER: suction bottle
MMGE-436	KIT: emergency airway equipment, portable
MMSP-051	MEDICAL SERVICES PANEL: wall mounted
WIFX-058.04	WINDOW: fixed, internal, double glazed, sill at 1050H, with integral blind
WIFX-155.01	WINDOW: fixed, external, double glazed, sill at 600H
WLFI-002	WALL FINISH: paint, clinical areas
WLFI-101	SPLASHBACK: vinyl
WLPR-006.01	WALL PROTECTION: corner guards, to 900 AFFL