

AUSTRALASIAN HFG STANDARD COMPONENTS

Room Layout Sheet

Room Name Clean Utility, 12m2

RLS Room Code CLUR-12
RDS Room Code CLUR-12

- AS

COM/2

DHT

DMG

DP

DS

DSA

FS

GPO/1

LS/P

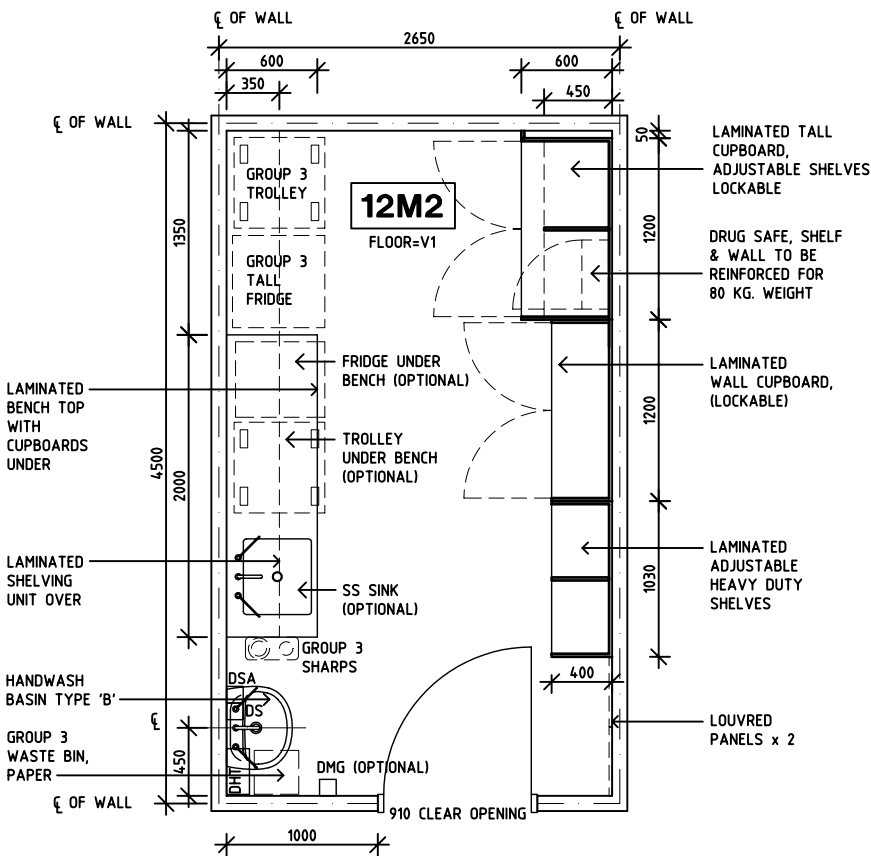
LS/R

OP

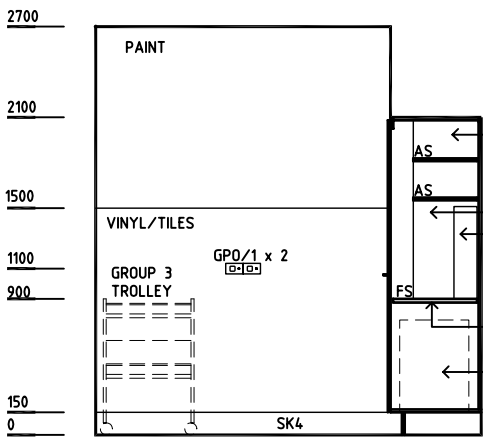
SK4

SS

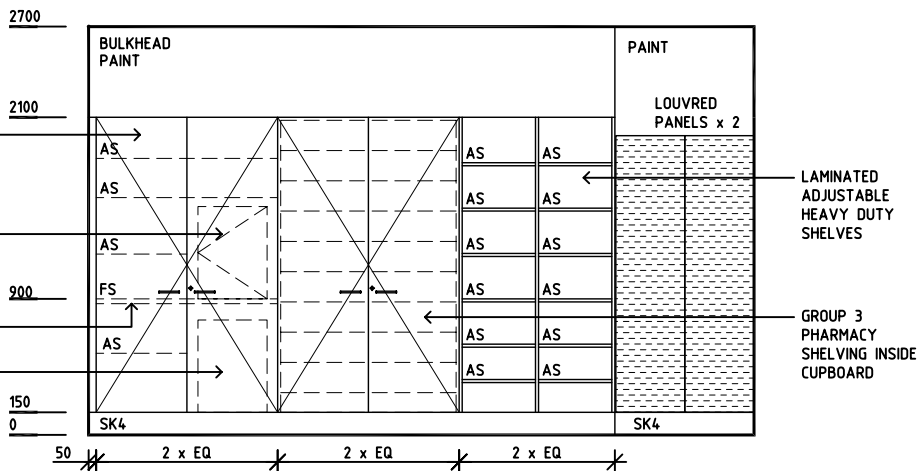
V1
- ADJUSTABLE SHELF
COMMUNICATION OUTLET-DOUBLE
DISPENSER - HAND TOWEL
DISPENSER - MEDICATED HAND GEL
DOOR AND DOOR FRAME PROTECTION
DISPENSER - SOAP
DISPENSER - SOAP ANTISEPTIC
FIXED SHELF
GENERAL PURPOSE OUTLET - SINGLE
LIGHT SWITCH - PELMET TASK LIGHT
LIGHT SWITCH - ROOM
OBSERVATION PANEL
FLOOR VINYL COVED SKIRTING
STAINLESS STEEL
VINYL FLOORING, STANDARD



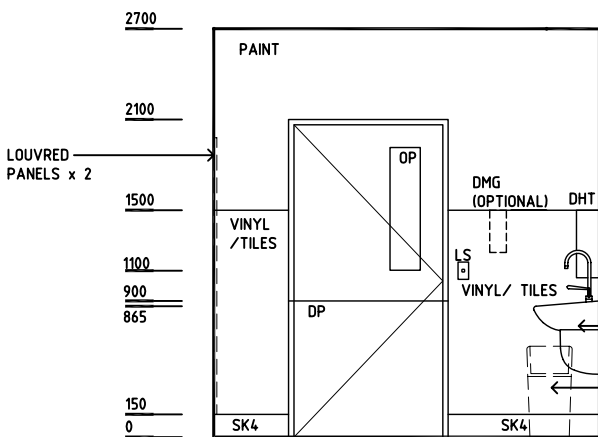
PLAN



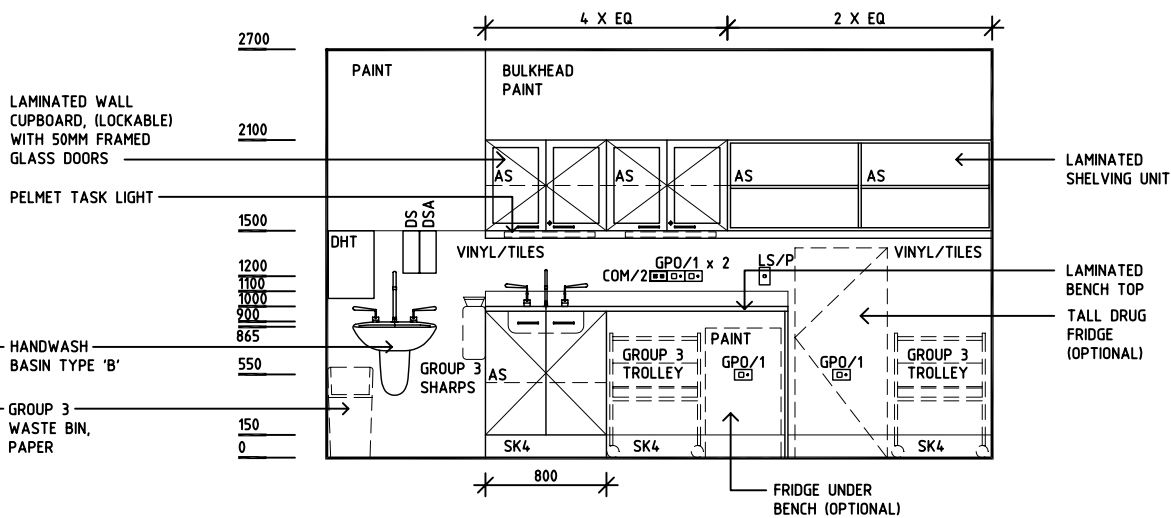
ELEVATION 1



ELEVATION 2



ELEVATION 3



ELEVATION 4

REV	DESCRIPTION	DATE	BY	REV	DESCRIPTION	DATE	BY	REV	DESCRIPTION	DATE	BY
1	FIRST ISSUE	03.6.05	AL								
2	2008 AUS HFG REVIEW, GENERAL REVISION	10.12.08	CX								

Australasian HFG

AHIA in association with
UNSW



DESIGNED	APPROVED	SCALE(S)	ZONE(S)
AL	DB	150 in A3	
CAD FILE NAME CLUR-12		PAPER DRAWING ID CLUR-12	